

Northampton Borough Scrutiny Panel 1 Serious Acquisitive Crime and Violent Crime/ Community Safety



NORTHAMPTON
B O R O U G H C O U N C I L

Please find enclosed the agenda and supporting papers for **Scrutiny Panel 1 Serious Acquisitive Crime and Violent Crime/ Community Safety**

Date: **Monday, 18 June 2012**

Time: **6:00 pm**

Place: **The Jeffrey Room, St. Giles Square, Northampton, NN1 1DE.**

If you need any advice or information regarding this agenda please phone Tracy Tiff, Scrutiny Officer on direct dial 01604 837408 who will be able to assist with your enquiry.

For further information regarding **Scrutiny Panel 1 Serious Acquisitive Crime and Violent Crime/ Community Safety** please visit the website www.northampton.gov.uk/scrutiny

Members of the Panel

Chair	Councillor Danielle Stone
Panel Members	Councillor Michael Ford Councillor Brendan Glynane Councillor Dennis Meredith Councillor Christopher Malpas Councillor David Palethorpe Councillor Brian W Sargeant
Co-opted Member	Neil Bartholomey Chair Northampton Pub Watch Further Co optees to be confirmed.

Northampton Borough Scrutiny Panel 1 Serious Acquisitive Crime and Violent Crime/ Community Safety

Calendar of meetings

Date	Room
15 August 2012 10 October 2012 26 November 2012 10 January 2013 4 February 2013 21 March 2013 8 April 2013.	All meetings to be held in the Jeffery Room at the Guildhall unless otherwise stated.

Agenda

Item No	Title	Pages	Action required
1	Apologies		Members to note any apologies and substitutions.
2	Minutes	1 - 6	Members to approve the minutes of the meeting held on 2 nd May 2012 (Copy attached).
3	Deputations / Public Addresses		<p>The Chair to note public address requests.</p> <p>The public can speak on any agenda item for a maximum of three minutes per speaker per item. You are not required to register your intention to speak in advance but should arrive at the meeting a few minutes early, complete a Public Address Protocol and notify the Scrutiny Officer of your intention to speak.</p>
4	Declarations of Interest (Including Whipping)		Members to state any interests.
5	Baseline Data	7 - 30	<p>The Scrutiny Panel to consider data on:</p> <p>Context:</p> <ul style="list-style-type: none"> Local statistics Demographics – local Benchmarking data from comparable Local Authorities <p>Baseline data:</p> <ul style="list-style-type: none"> National crime statistics Local crime statistics

Northampton Borough Scrutiny Panel 1 Serious Acquisitive Crime and Violent Crime/ Community Safety

6	Briefing Note: Potential Site Visits	31	The Scrutiny Panel to consider a briefing note suggesting potential site visits.
7	Equality Impact Assessment for the Review	32 - 42	The Scrutiny Panel to approve the Equality Impact Assessment for this Review.

SCRUINY PANEL 1 SERIOUS ACQUISITIVE CRIME/ COMMUNITY SAFETY

Wednesday, 2 May 2012

PRESENT: Councillor Danielle Stone (Chair); Councillors Brendan Glynane, Christopher Malpas and David Palethorpe

OFFICERS: Tracy Tiff – Overview and Scrutiny Officer
Debbie Ferguson – Community Safety Officer
Will Finn - Community Safety Data Analyst
Steve Elsey - Environmental Health Manage
Cllr Les Marriott – Observer - Chair of Overview and Scrutiny
Cllr Terry Wire DL – Observer

1. APOLOGIES

Apologies were received from Councillors Meredith and Sargeant.

2. DEPUTATIONS / PUBLIC ADDRESSES

The Chair proposed that a Vice Chair be appointed for the duration of the Panel. It was agreed that this would be Councillor Palethorpe.

3. DECLARATIONS OF INTEREST (INCLUDING WHIPPING)

Councillor Glynane declared a personal, non-prejudicial interest (for the duration of the panel) as a member of Northamptonshire Police Authority.

4. TO SET THE SCOPE OF THE REVIEW.

The Chair welcomed everyone to the meeting and commented that the priority was to set the scope of the review. The panel agreed that the objective and purpose of the scope be widened as demonstrated in the attached document.

The panel agreed that there was a need for partnership working to allow for other agencies to feed information into the review and identify any potential gaps that would need to be addressed. It was also agreed that a benchmark be put in place to allow for measurability.

It was proposed that a Neighbourhood Warden be invited to offer information and evidence on Serious Acquisitive Crime in Northampton; the panel requested that another Warden be invited, who covered another area of Northampton, to offer a balanced perspective.

The panel agreed that they would contact a number of people/organisations to feed into the review, which included:

- 1) A representative from a Northamptonshire Prison.
- 2) A representative from Victim Support
- 3) Representation from a youth group such as the Youth Forum or from the University.
- 4) The new Northamptonshire Police Commissioner, when in post.
- 5) A representative from the Police with regards to the planning aspects of reducing crime through architectural and environmental design.
- 6) A representative from Public Health regarding A & E data that is collected on violent crime.

The panel agreed that domestic violence was also another key consideration as it was highlighted by one member, that during large sporting events – i.e the Olympics that the number of cases of domestic violence escalated.

Emphasis was placed on the need for a good working relationship to be established with the new Police Commissioner.

It was noted that a review of the impact of the report would be heard after 6 months.

AGREED: That the scope of the Review as attached at Appendix A be presented to the Overview and Scrutiny Committee at its meeting on 28th May 2012 for approval

5. SCOPING DOCUMENT

The meeting concluded at 6.44pm



OVERVIEW AND SCRUTINY

SCRUTINY PANEL 1 – SERIOUS ACQUISITIVE CRIME AND VIOLENT CRIME/COMMUNITY SAFETY

1. Purpose/Objectives of the Review

- To investigate, as a benchmark, Northampton's crime statistics in relation to serious acquisitive and violent crime
- To identify 'hotspots' in relation to serious acquisitive and violent crime
- To identify the impact that serious acquisitive crime and violent crime has on the residents of Northampton
- To identify the serious acquisitive crime and violent crime issues that Northampton Borough Council, in partnership with other Agencies, can have an impact upon

2. Outcomes Required

- To provide a research paper for 2013/2014 to the Police and Crime Commissioner (PCC) detailing outcomes and the Council's priorities
- To investigate what Northampton Borough Council services can do to add further value to effectively addressing serious acquisitive crime across the borough
- To identify which services within the Council that could contribute to the reduction in serious acquisitive crime
- To make recommendations for improvement, as appropriate

3. Information Required

- Context:
 - Local statistics
 - Demographics – local and national
 - Benchmarking data from comparable Local Authorities
- Baseline data:

National crime statistics

Local crime statistics

- Synopsis of various research documents and other published documents
- Evidence from expert internal witnesses
- Evidence from expert external witnesses
- Evidence from ward Councillors
- Best practice data
- Site visits
- Desktop research

4. Format of Information

- Officer reports/presentations
- Baseline data such as:
 - Performance data - National and Local Crime Statistics
Identified 'hotspots'
- Published reports (précis's) such as:
 - Environmental audits
 - SAC Evaluation documents
 - Strategic Assessment 2011/2012
 - Community Safety Partnership Strategy 2012/2013
- NBC – Leader of the Council evidence
- Evidence from Julie Seddon, the Chair of Community Safety Partnership
- Evidence from Mark Evans, Laura Mayor, Crime Prevention Manager, Chief Inspector Fay Tennet, Northants Police
- Evidence from Deborah Presbury, IOM Team, Northants Probation
- Evidence from Neighbourhood Wardens
- Evidence from the Head of Offender Management Services, Northampton Prisons
- Evidence from Dawn Wintle, Accident and Emergency, Northampton General Hospital
- Evidence from Victim Support
- Evidence from the Northampton Youth Forum
- Evidence from the Police and Crime Commissioner
- Evidence from Housing Services, Northampton Borough Council
- Evidence from Neighbourhood Management, Northampton Borough Council
- Evidence from Lynn Chapman, Sunflower Centre
- Evidence from ward Councillors
- Expert advice – Internal and external
- Best practice
- Witness interviews/evidence

5. Methods Used to Gather Information

- Minutes of meetings
- Desktop research
- Site Visits (if applicable)
- Officer reports
- Presentations
- Examples of best practice
- Witness Evidence:-

➤ Key witnesses as detailed in section 4 of this scope

6. Co-Options to the Review

- Sharon Henley, Architectural Liaison Officer, Northants Police, to be approached suggesting that she is co opted to this Review for its life.

7 Equality Impact Screening Assessment

- An Equality Impact Screening Assessment to be undertaken on the scope of the Review

8 Evidence gathering Timetable

May 2012 to April 2013

- Wednesday, 2 May 2012 - Scoping meeting
- Monday, 18 June 2012 – Evidence gathering
- Wednesday, 15 August 2012 – Evidence gathering
- Wednesday, 10 October 2012 – Evidence gathering
- Monday, 26 November 2012 – Evidence gathering
- Thursday, 10 January 2013 – Evidence gathering/approval final report
- -Monday, 4 February 2013 – If required
- Thursday, 21 March 2013 – If required
- Monday, 8 April 2013 – If required

Various site visits will be programmed during this period if required.

Meetings to commence at 6.00 pm

7. Responsible Officers

Lead Officer Steve Elsey, Head of Public Protection

Co-ordinator Tracy Tiff, Scrutiny Officer

8. Resources and Budgets

Steve Elsey, Head of Public Protection, to provide internal advice.

9 Final report presented by:

Completed by 8 April 2013. Presented by the Chair of the Panel to the Overview and Scrutiny Committee and then to Cabinet.

10 Monitoring procedure:

Review the impact of the report after six months (December 2013)

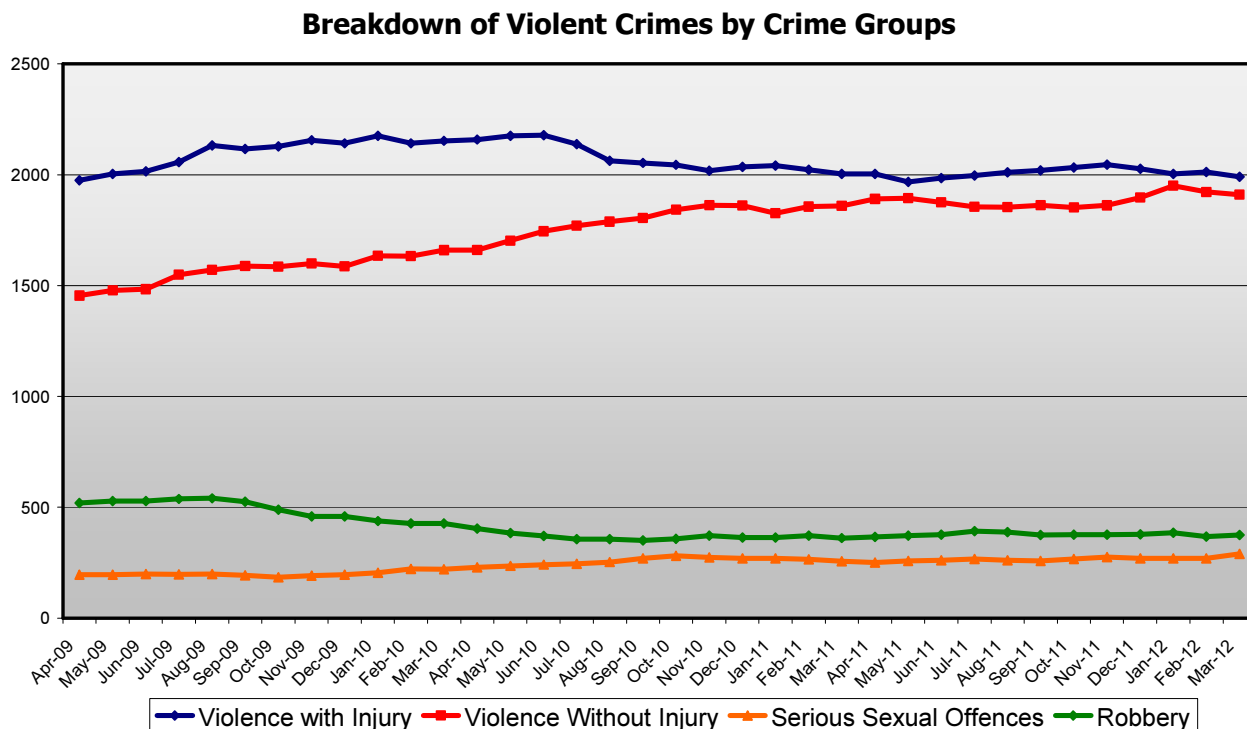
Northampton Borough Council Scrutiny Panel 1
Violent Crime/ Community Safety
Performance & Hotspot Data.

Contents

- Performance Data by Crime Group
- 2011/12 Performance Data by Crime Type
- 2011/12 Performance Data by Sector
- 2011/12 Hotspot Location Performance Data by Priority Wards
- Most Similar CSP Comparative Performance
- Cross County Comparative Performance

Violence Performance Data by Crime Group (2009/10 – 2011/12)

The graph below shows the volume of the key elements of violent crime on a 12 month rolling total.

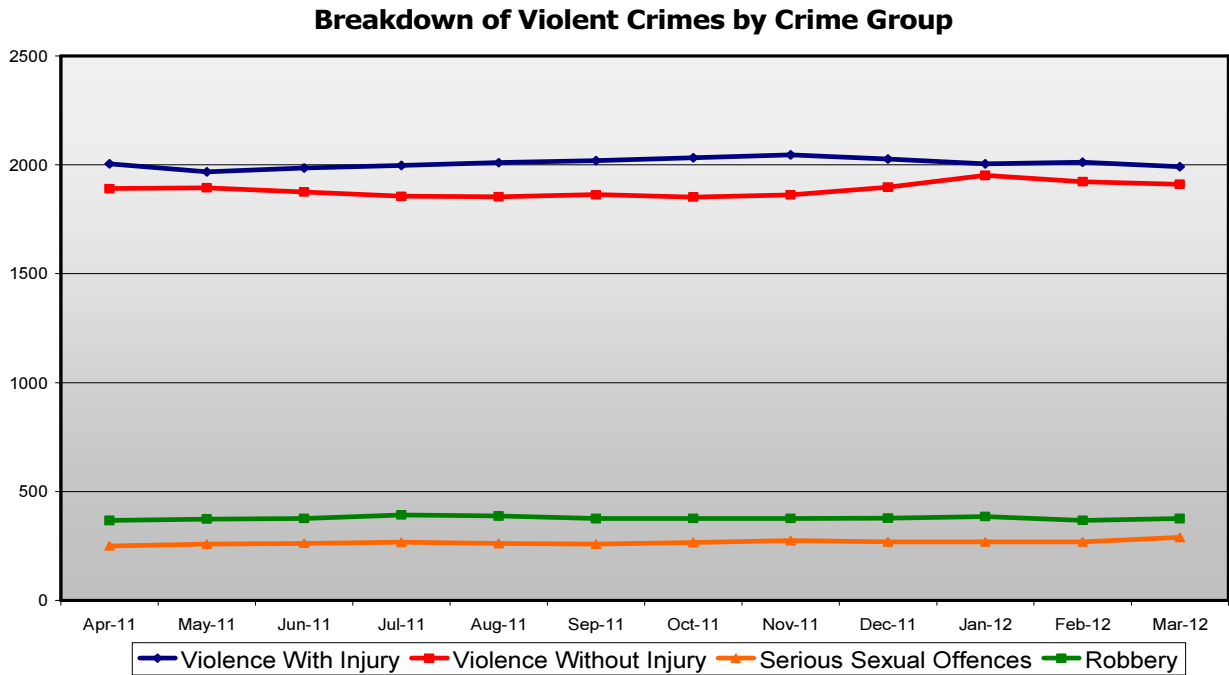


The table below shows the annual percentage change in volume of the key elements of violent crime in the past three years.

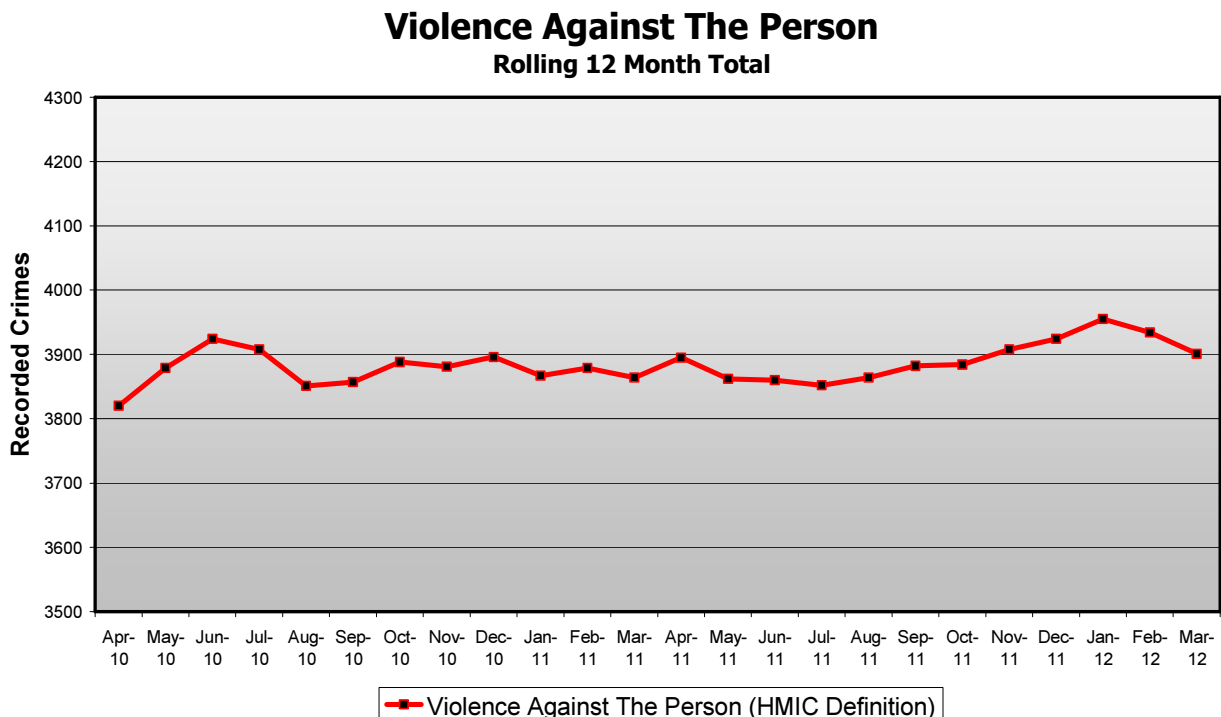
Northampton: Annual Violence Performance by Crime Group								
Crime Type	2008/09		2009/10		2010/11		2011/12	
	Volume	Annual % Change	Volume	Annual % Change	Volume	Annual % Change	Volume	Annual % Change
Violence with Injury	1937		2153	11.2%	2004	-6.9%	1991	-0.6%
Violence Without Injury	1441		1660	15.2%	1860	12.0%	1910	2.7%
Serious Sexual Offences	203		220	8.4%	257	16.8%	289	12.5%
Robbery	503		426	-15.3%	361	-15.3%	376	4.2%
Violence (exc Public Order)	4084		4459	9.2%	4482	0.5%	4566	1.9%

Violence Performance Data by Crime Group 2011/12

The graph below shows the volume of the key elements of violent crime on a 12 month rolling total in 2011/12 only.



The graph below shows the volume of serious acquisitive crime against the CSP annual targets on a 12 month rolling total.



Violence performance Data by Sector 2011/12

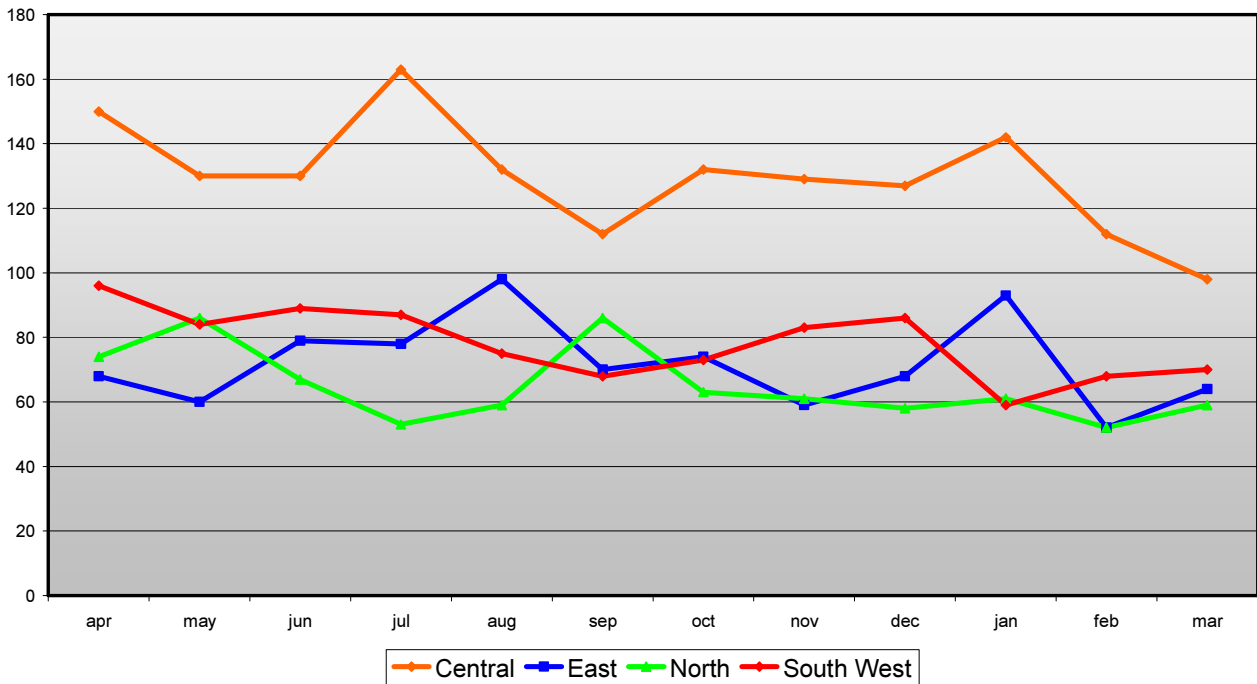
The tables below show the annual percentage change in different elements of violence in each sector of Northampton during 2011/12. NB: The 'violence' category is now a sum of the three categories above.

Central Sector				East Sector			
Crime Type	Volume		Change	Crime Type	Volume		Change
	2010/11	2011/12			2010/11	2011/12	
Assault with Less Serious Injury	709	638	-10.0%	Assault with Less Serious Injury	379	355	-6.3%
Most Serious Violence	84	86	2.4%	Most Serious Violence	25	23	-8.0%
Serious Sexual Offences	75	55	-26.7%	Serious Sexual Offences	51	60	17.6%
Violence	1690	1557	-7.9%	Violence	877	863	-1.6%

North Sector				South West Sector			
Crime Type	Volume		Change	Crime Type	Volume		Change
	2010/11	2011/12			2010/11	2011/12	
Assault with Less Serious Injury	318	328	3.1%	Assault with Less Serious Injury	409	405	-1.0%
Most Serious Violence	39	27	-30.8%	Most Serious Violence	29	27	-6.9%
Serious Sexual Offences	56	72	28.6%	Serious Sexual Offences	57	57	0.0%
Violence	795	779	-2.0%	Violence	945	938	-0.7%

The graph below shows the monthly volume of violence offences in each sector during 2011/12.

Monthly Volume of Violence Offences By Sector



Violence Performance: Top Wards in Northamptonshire 2011/12

The table below is extracted from a recent violence problem profile produced by Northants Police analysis team. As a result it includes wards from outside of Northampton Borough. The table shows five of the top ten wards for all violent crime are located in Northampton Borough, 22.9% of the violent crime in Northamptonshire occurs in these five wards.

NB: This data is for 2011/12 only. .

NB: The wards below are based upon pre 2011 ward boundaries, as the police still work to these.

Ward Name	All Violent Crime		MSV		AWLSI		Common Assault		Sexual Offences		SSO		Robbery	
		%		%		%		%		%		%		%
Castle	969	9.2%	49	12.8%	367	9.4%	256	8.6%	35	5.4%	29	5.6%	35	5.6%
St Crispin	640	6.1%	31	8.1%	245	6.3%	142	4.8%	28	4.3%	21	4.0%	36	5.7%
Swanspool	309	2.9%	15	3.9%	111	2.9%	68	2.3%	18	2.8%	14	2.7%	36	5.7%
William Knibb	307	2.9%	17	4.4%	104	2.7%	79	2.7%	13	2.0%	11	2.1%	14	2.2%
Lumbertubs	274	2.6%	5	1.3%	88	2.3%	77	2.6%	28	4.3%	21	4.0%	29	4.6%
Kingswood	230	2.2%	10	2.6%	82	2.1%	78	2.6%	11	1.7%	9	1.7%	14	2.2%
All Saints	215	2.1%	6	1.6%	92	2.4%	61	2.1%	13	2.0%	12	2.3%	10	1.6%
Spencer	219	2.1%	5	1.3%	78	2.0%	61	2.1%	14	2.1%	13	2.5%	12	1.9%
Abbey South	200	1.9%	12	3.1%	80	2.1%	46	1.6%	5	0.8%	4	0.8%	4	0.6%
Kingsley	195	1.9%	3	0.8%	72	1.9%	62	2.1%	18	2.8%	15	2.9%	16	2.6%
Total for Ten Wards	3558	33.8%	153	39.9%	1319	33.8%	930	31.4%	183	28.0%	149	28.7%	206	32.9%

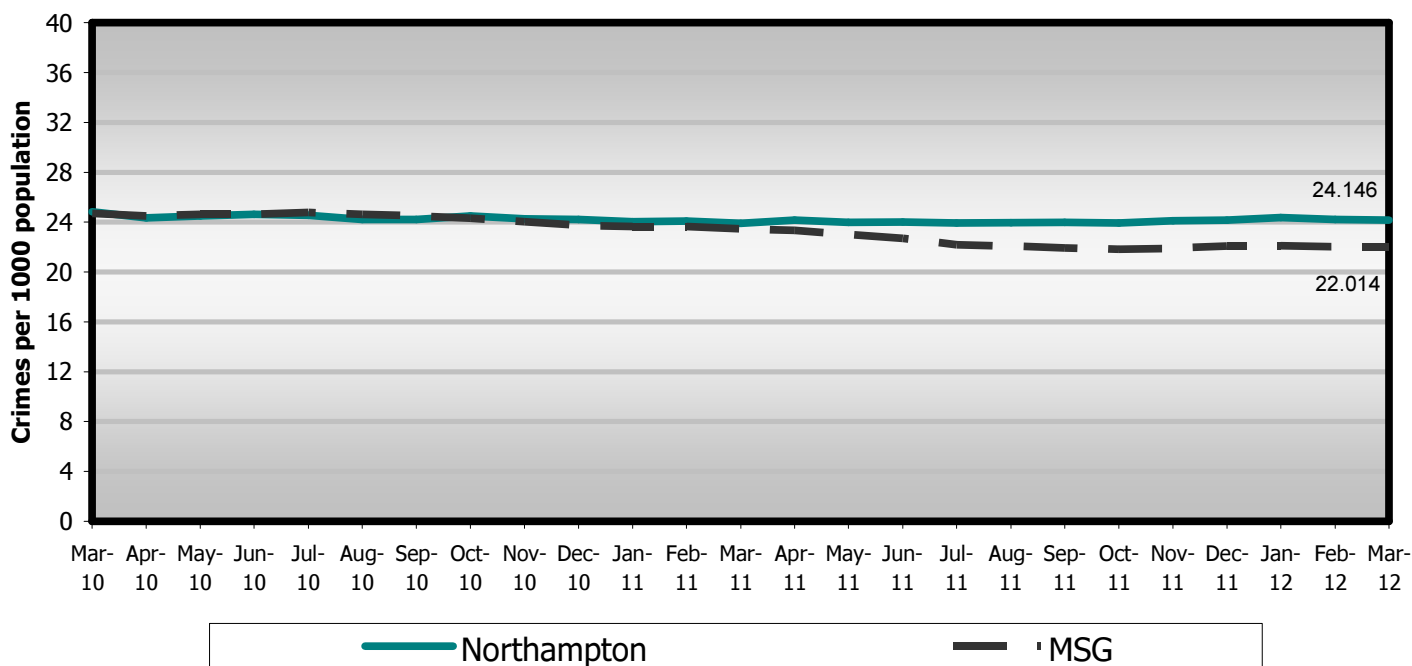
Comparative Performance Against Most Similar CSPs.

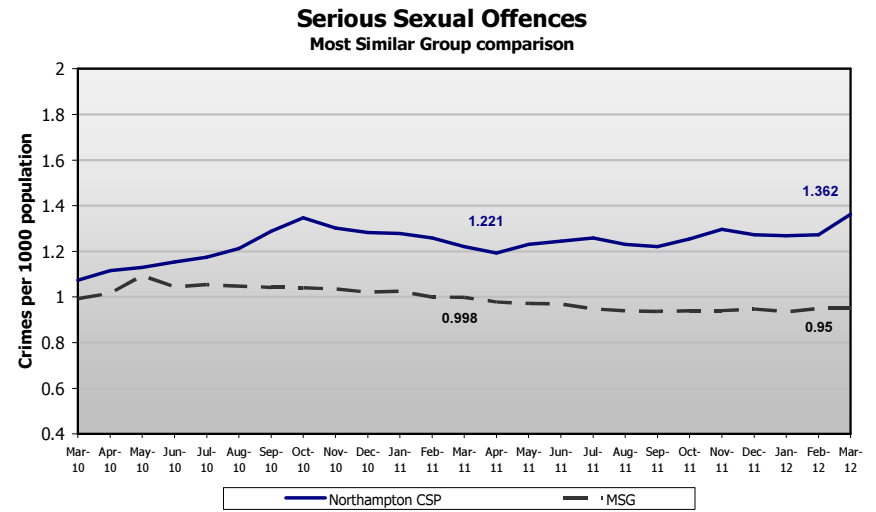
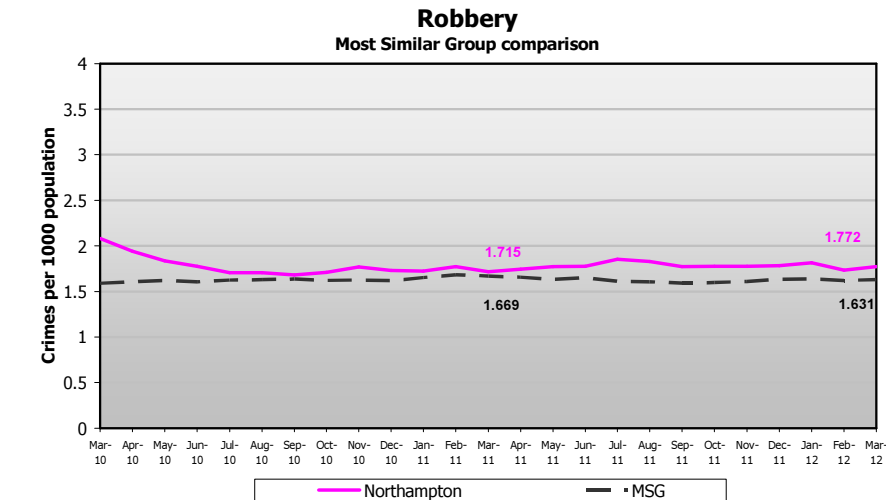
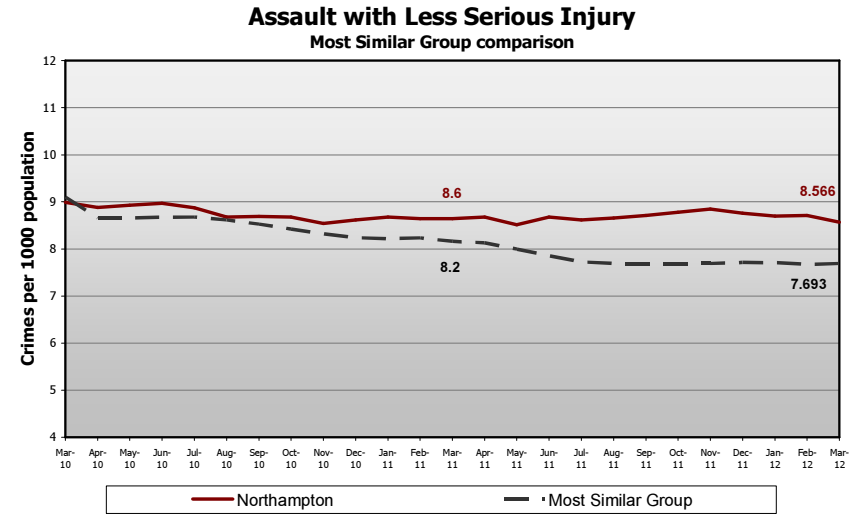
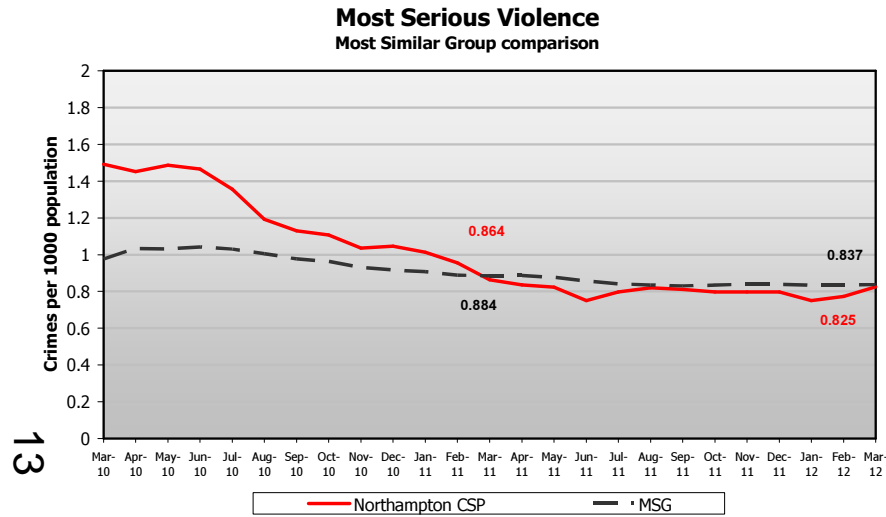
Community Safety Partnerships are placed in groups of fifteen Partnerships defined by the Home Office as having enough similar characteristics to allow a reasonable comparison of their performance: this is known as the Most Similar Group. A list of CSPs in Northampton's most similar group is below.

<ul style="list-style-type: none"> • Bedfordshire – Luton • Devon & Cornwall – Plymouth • Devon & Cornwall – Torbay • Gloucestershire – Gloucester • Greater Manchester – Trafford • Kent – Dartford & Gravesham • Lancashire – Blackpool • Metropolitan Police – Hillingdon 	<ul style="list-style-type: none"> • Metropolitan Police – Hounslow • Northamptonshire - Northampton • Suffolk – Ipswich • Thames Valley – Milton Keynes • Thames Valley – Slough • West Midlands – Coventry • Wiltshire - Swindon
--	--

The graphs below show Northampton CSP's performance against the average for our most similar groups. Performance is monitored in terms of crimes per 1000 population.

Violent Crime Most Similar Group comparison

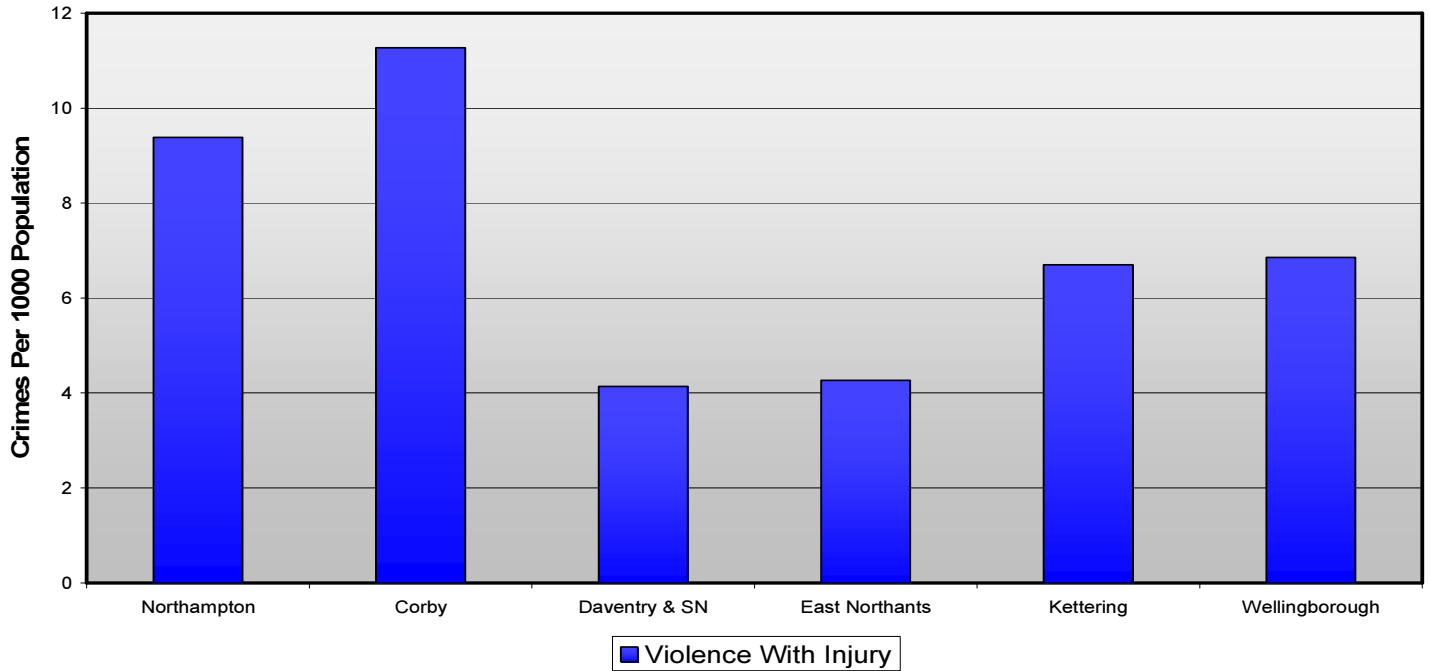




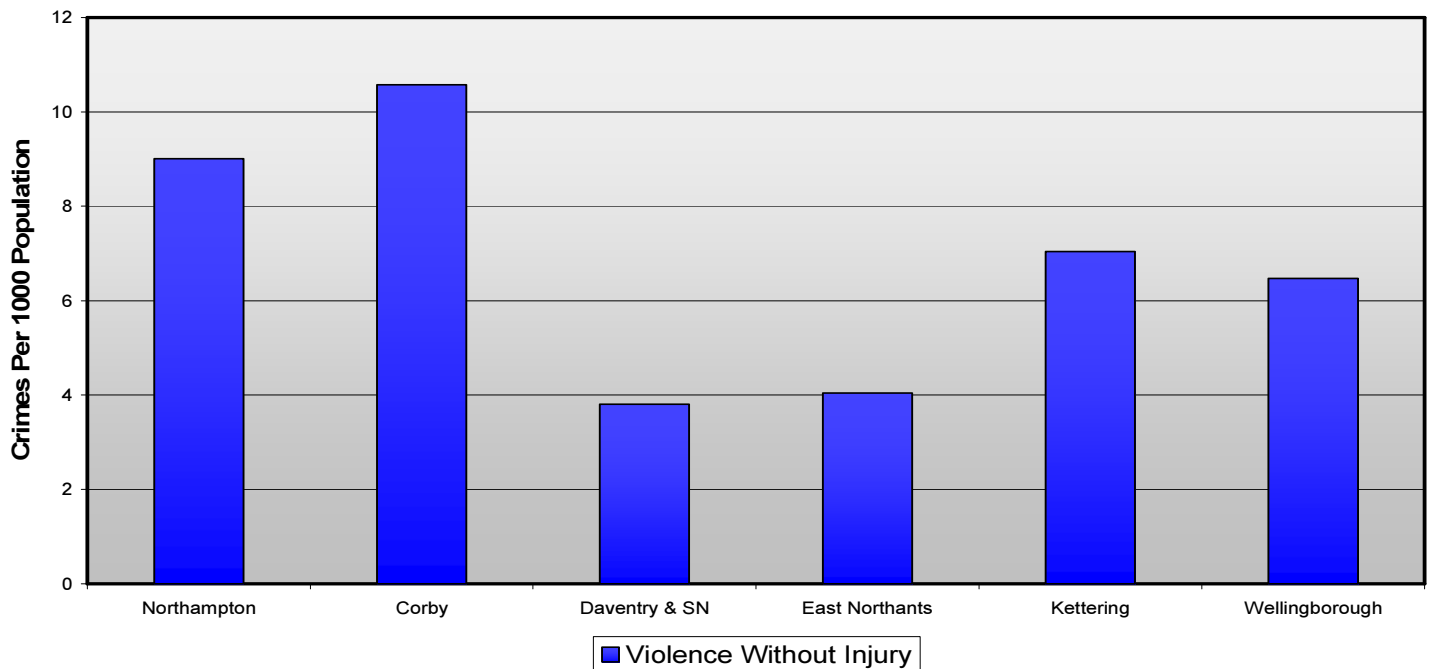
Cross County Comparative Performance

The graphs below show how Northampton compares to other localities within the county for different elements of violent crime. To allow reasonable comparison, accounting for population differences, the volume of crime is shown in terms of crimes per 1000 population.

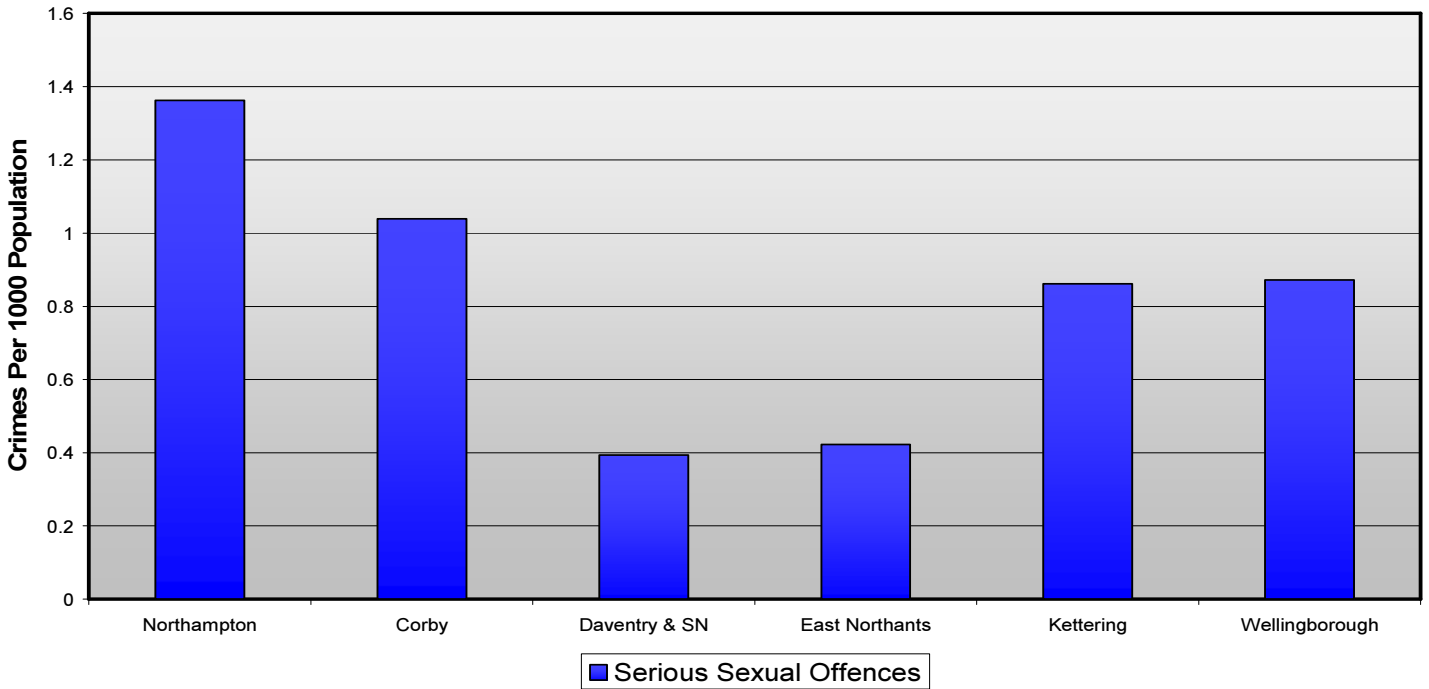
Violence With Injury: Crimes Per 1000 Population (2011/12)



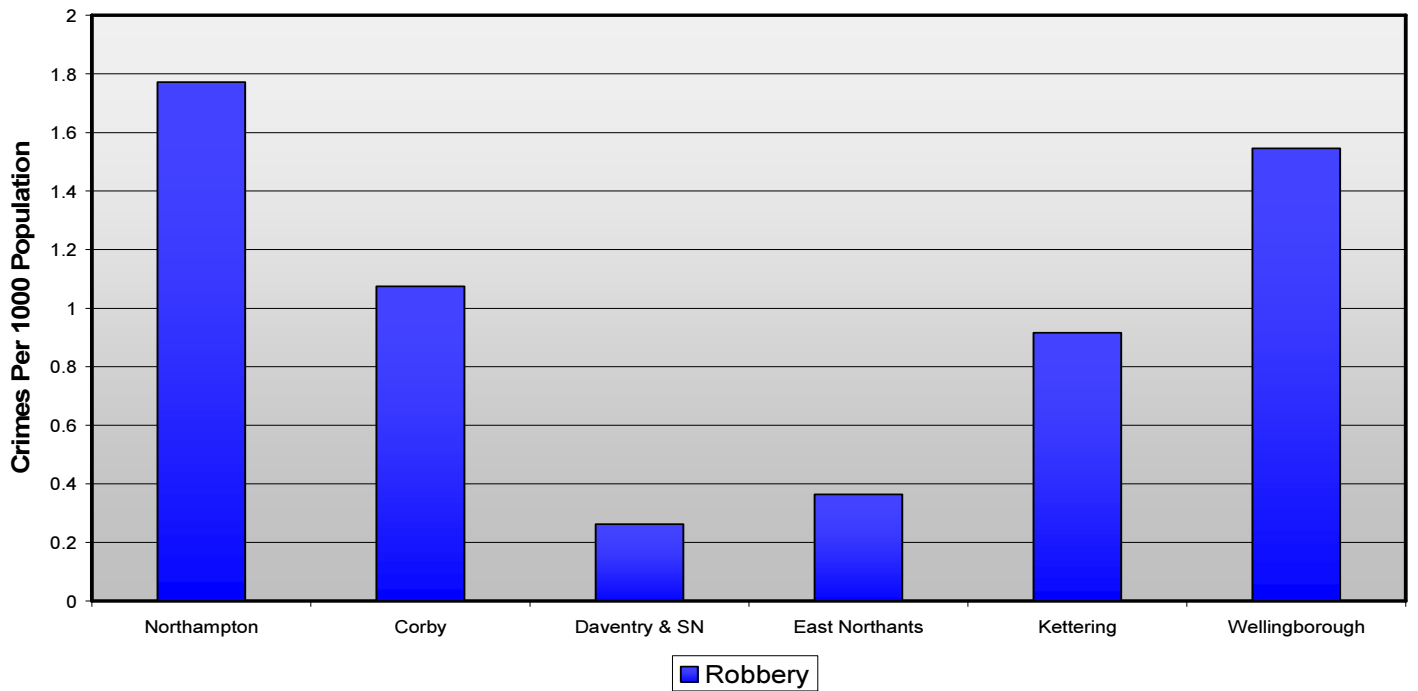
Violence Without Injury: Crimes Per 1000 Population (2011/12)



Serious Sexual Offences: Crimes Per 1000 Population (2011/12)



Robbery: Crimes Per 1000 Population (2011/12)



Northampton Borough Council Scrutiny Panel 1 Serious Acquisitive Crime/ Community Safety *Performance & Hotspot Data.*

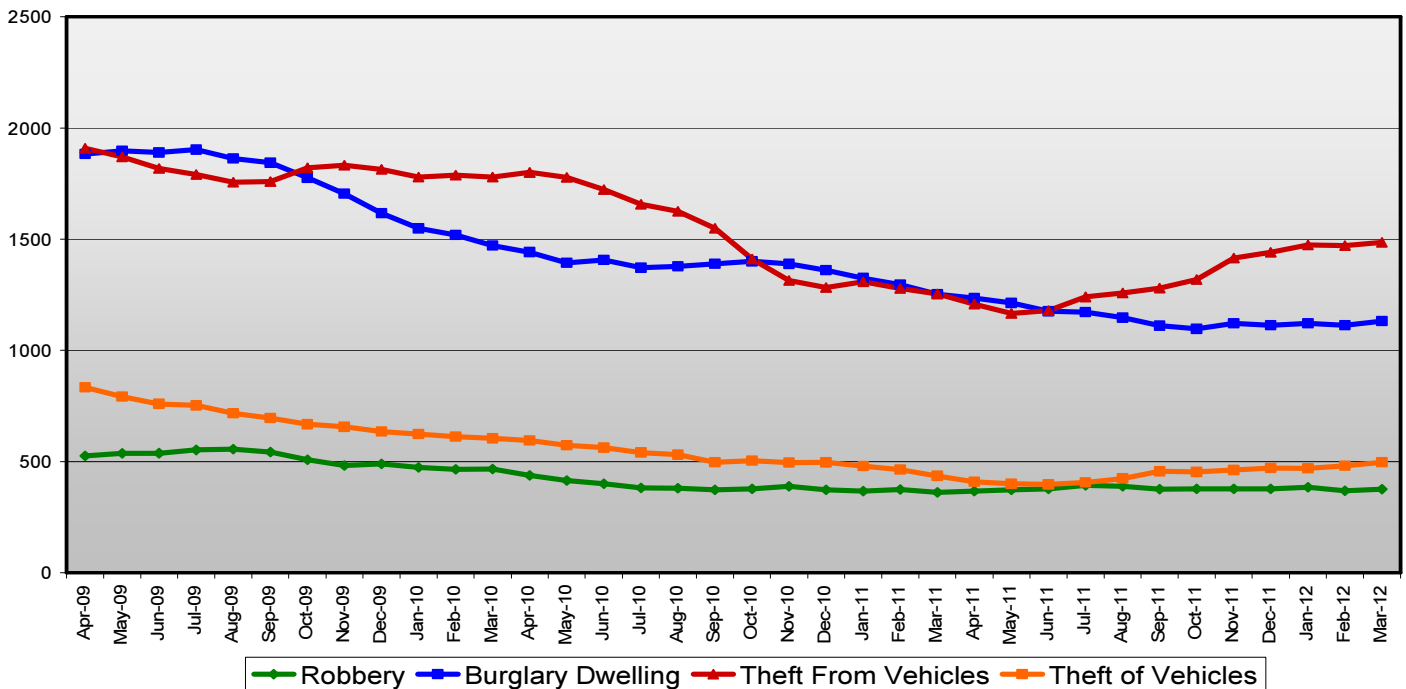
Contents

- Performance Data by Crime Type
- 2011/12 Performance Data by Crime Type
- 2011/12 Performance Data by Sector
- 2011/12 Hotspot Location Performance Data by Priority Wards
- Most Similar CSP Comparative Performance
- Cross County Comparative Performance

SAC Performance Data by Crime Type (2009/10 – 2011/12)

The graph below shows the volume of all four elements of serious acquisitive crime on a 12 month rolling total.

Breakdown Of Serious Acquisitive Crime by Crime Type



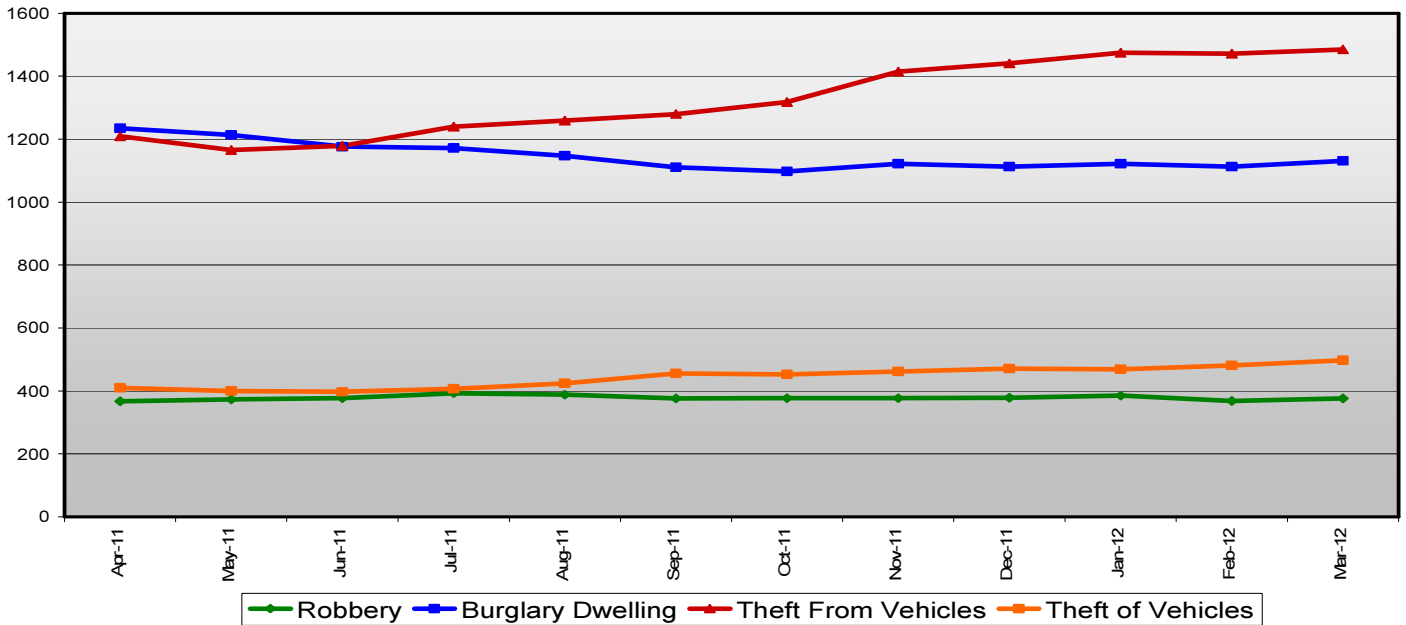
The table below shows the annual percentage change in all four elements of serious acquisitive crime in the past three years.

Northampton: Annual SAC Performance by Crime Type								
Crime Type	2008/09		2009/10		2010/11		2011/12	
	Volume	Annual % Change	Volume	Annual % Change	Volume	Annual % Change	Volume	Annual % Change
Burglary Dwelling	1882		1472	-21.8%	1253	-14.9%	1131	-9.7%
Theft from Vehicles	1965		1779	-9.5%	1254	-29.5%	1485	18.4%
Theft of Vehicles	854		601	-29.6%	436	-27.5%	497	14.0%
Robbery	503		426	-15.3%	361	-15.3%	376	4.2%
Total SAC	5204		4278	-17.8%	3304	-22.8%	3489	5.6%

SAC Performance Data by Crime Type 2011/12

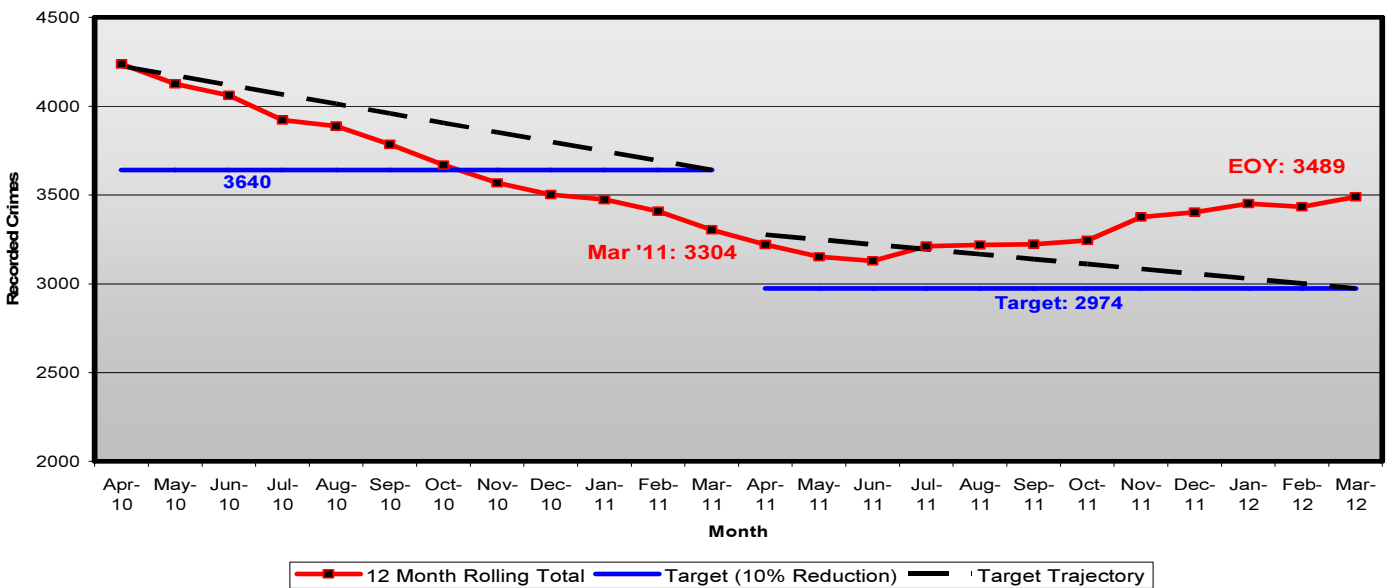
The graph below shows the volume of all four elements of serious acquisitive crime on a 12 month rolling total in 2011/12 only.

Breakdown Of Serious Acquisitive Crime by Crime Type



The graph below shows the volume of serious acquisitive crime against the CSP annual targets on a 12 month rolling total.

**Serious Acquisitive Crime
Rolling 12 Month Totals**



SAC Performance Data by Sector 2011/12

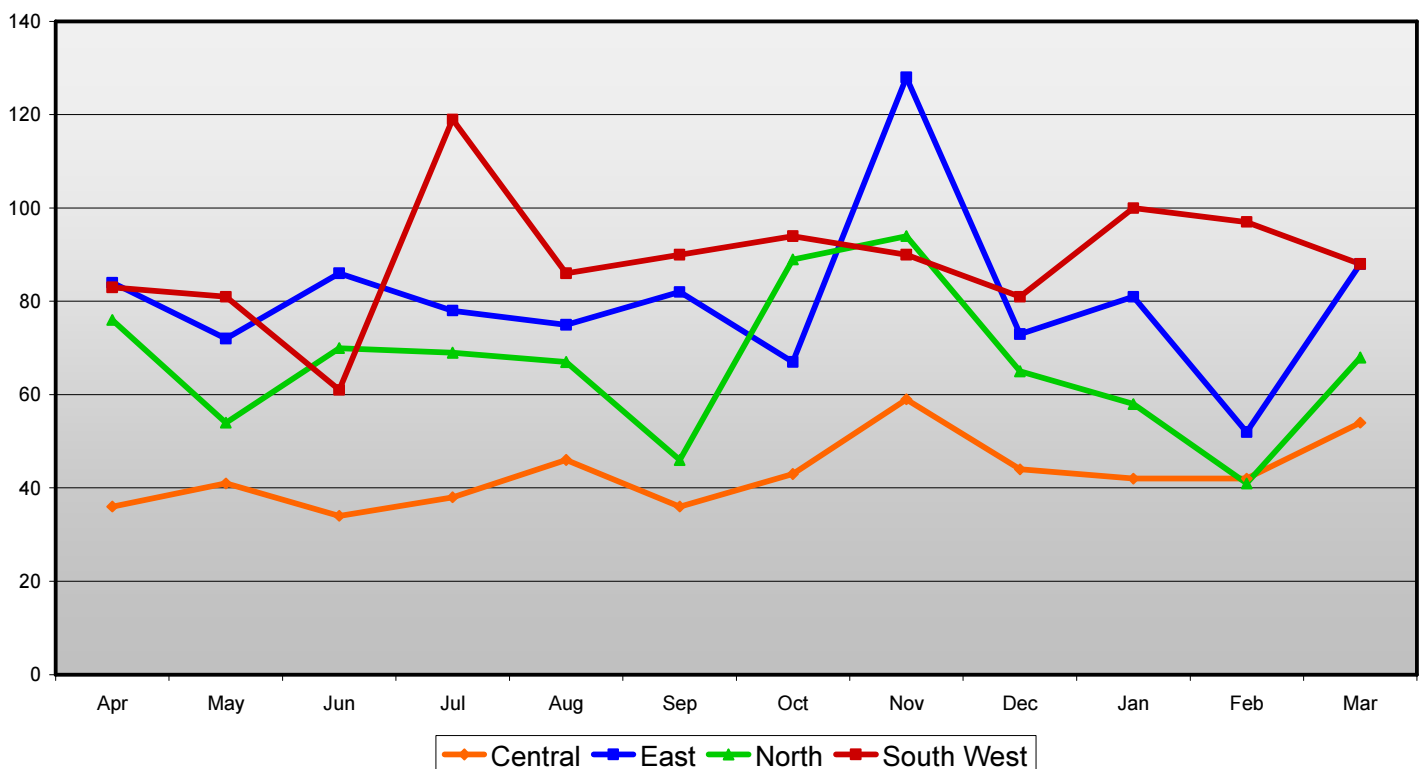
The tables below show the annual percentage change in three elements of SAC (theft from and theft of vehicles is grouped together) in each sector of Northampton during 2011/12.

Central Sector				East Sector			
Crime Type	Volume		Change	Crime Type	Volume		Change
	2010/11	2011/12			2010/11	2011/12	
Burglary Dwelling	182	171	-6.0%	Burglary Dwelling	401	314	-21.7%
Vehicle Crime	292	260	-11.0%	Vehicle Crime	479	542	13.2%
Robbery	122	84	-31.1%	Robbery	100	110	10.0%
Total SAC	596	515	-13.6%	Total SAC	980	966	-1.4%

North Sector				South West Sector			
Crime Type	Volume		Change	Crime Type	Volume		Change
	2010/11	2011/12			2010/11	2011/12	
Burglary Dwelling	354	264	-25.4%	Burglary Dwelling	316	362	14.6%
Vehicle Crime	465	442	-4.9%	Vehicle Crime	439	638	45.3%
Robbery	82	91	11.0%	Robbery	55	70	27.3%
Total SAC	901	797	-11.5%	Total SAC	810	1070	32.1%

The graph below shows the monthly volume of total SAC offences in each sector during 2011/12.

Monthly Volume of SAC Offences by Sector



SAC Performance Data by Ward 2011/12

The tables below show the percentage change in three elements of serious acquisitive crime (theft from and theft of vehicles is grouped together) in the top ten wards for SAC in Northampton.

NB: This data is YTD figures up to 04/03/12 only.

NB: The wards below are based upon pre 2011 ward boundaries, as the police still work to these.

Abington				Lumbertubs			
Crime Type	Volume		Change	Crime Type	Volume		Change
	2010/11 YTD	2011/12 YTD			2010/11 YTD	2011/12 YTD	
Burglary Dwelling	63	74	17.5%	Burglary Dwelling	86	38	-55.8%
Vehicle Crime	107	87	-18.7%	Vehicle Crime	72	69	-4.2%
Robbery	28	27	-3.6%	Robbery	29	32	10.3%
Total SAC	198	188	-5.1%	Total SAC	187	139	-25.7%

Billing				Spencer			
Crime Type	Volume		Change	Crime Type	Volume		Change
	2010/11 YTD	2011/12 YTD			2010/11 YTD	2011/12 YTD	
Burglary Dwelling	62	46	-25.8%	Burglary Dwelling	65	57	-12.3%
Vehicle Crime	98	129	31.6%	Vehicle Crime	75	157	109.3%
Robbery	15	18	20.0%	Robbery	8	13	62.5%
Total SAC	175	193	10.3%	Total SAC	148	227	53.4%

Castle				St Crispins			
Crime Type	Volume		Change	Crime Type	Volume		Change
	2010/11 YTD	2011/12 YTD			2010/11 YTD	2011/12 YTD	
Burglary Dwelling	77	85	10.4%	Burglary Dwelling	88	73	-17.0%
Vehicle Crime	129	131	1.6%	Vehicle Crime	139	116	-16.5%
Robbery	65	39	-40.0%	Robbery	50	38	-24.0%
Total SAC	271	255	-5.9%	Total SAC	277	227	-18.1%

Delapre				St James			
Crime Type	Volume		Change	Crime Type	Volume		Change
	2010/11 YTD	2011/12 YTD			2010/11 YTD	2011/12 YTD	
Burglary Dwelling	60	60	0.0%	Burglary Dwelling	38	67	76.3%
Vehicle Crime	62	95	53.2%	Vehicle Crime	83	110	32.5%
Robbery	10	10	0.0%	Robbery	10	9	-10.0%
Total SAC	132	165	25.0%	Total SAC	131	186	42.0%

Kingsley				Thorplands			
Crime Type	Volume		Change	Crime Type	Volume		Change
	2010/11 YTD	2011/12 YTD			2010/11 YTD	2011/12 YTD	
Burglary Dwelling	75	65	-13.3%	Burglary Dwelling	58	51	-12.1%
Vehicle Crime	99	95	-4.0%	Vehicle Crime	66	71	7.6%
Robbery	27	17	-37.0%	Robbery	13	15	15.4%
Total SAC	201	177	-11.9%	Total SAC	137	137	0.0%

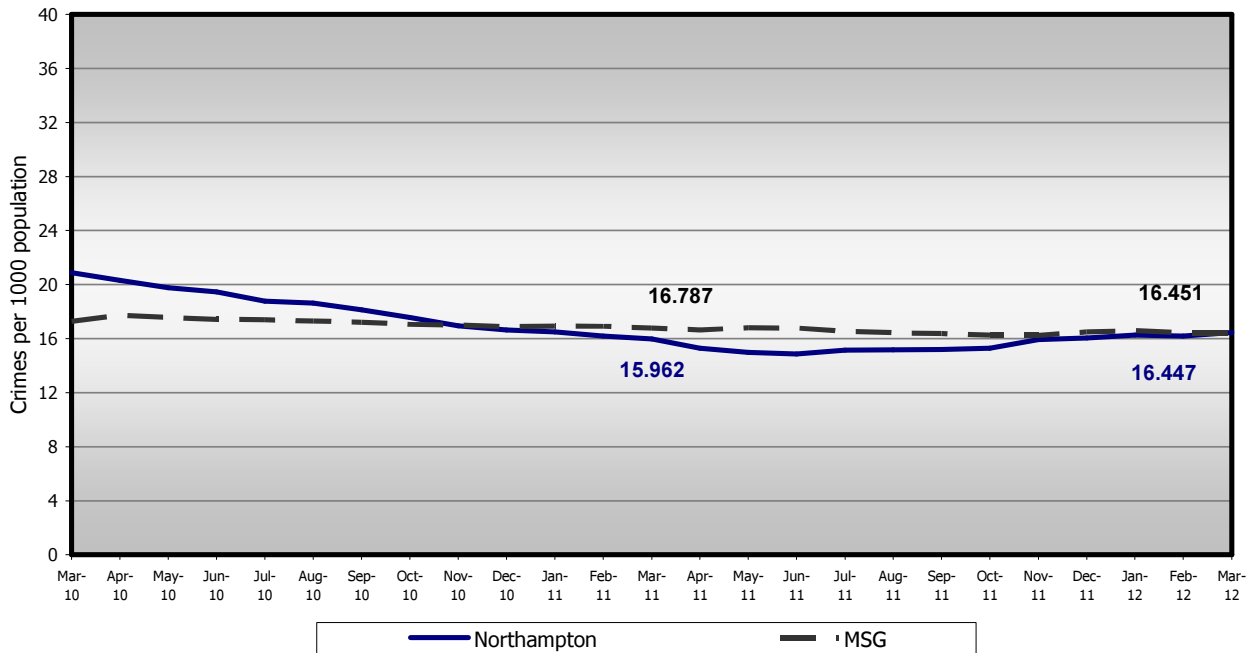
Comparative Performance Against Most Similar CSPs.

Community Safety Partnerships are placed in groups of fifteen Partnerships defined by the Home Office as having enough similar characteristics to allow a reasonable comparison of their performance: this is known as the Most Similar Group. A list of CSPs in Northampton’s most similar group is below.

<ul style="list-style-type: none"> • Bedfordshire – Luton • Devon & Cornwall – Plymouth • Devon & Cornwall – Torbay • Gloucestershire – Gloucester • Greater Manchester – Trafford • Kent – Dartford & Gravesham • Lancashire – Blackpool • Metropolitan Police – Hillingdon 	<ul style="list-style-type: none"> • Metropolitan Police – Hounslow • Northamptonshire - Northampton • Suffolk – Ipswich • Thames Valley – Milton Keynes • Thames Valley – Slough • West Midlands – Coventry • Wiltshire - Swindon
--	--

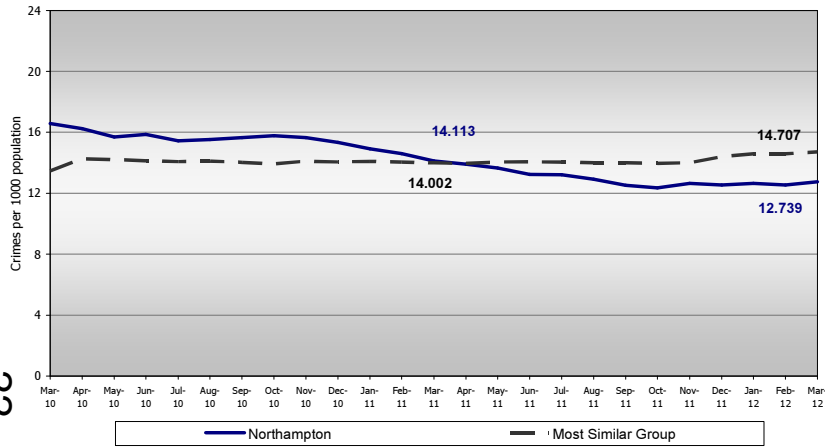
The graphs below show Northampton CSP’s performance against the average for our most similar groups. Performance is monitored in terms of crimes per 1000 population.

Serious Acquisitive Crime
 Most Similar Group Comparison

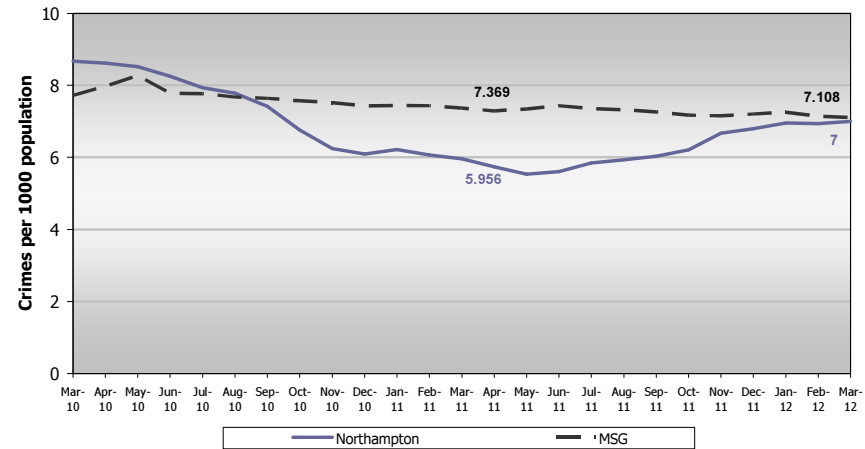


22

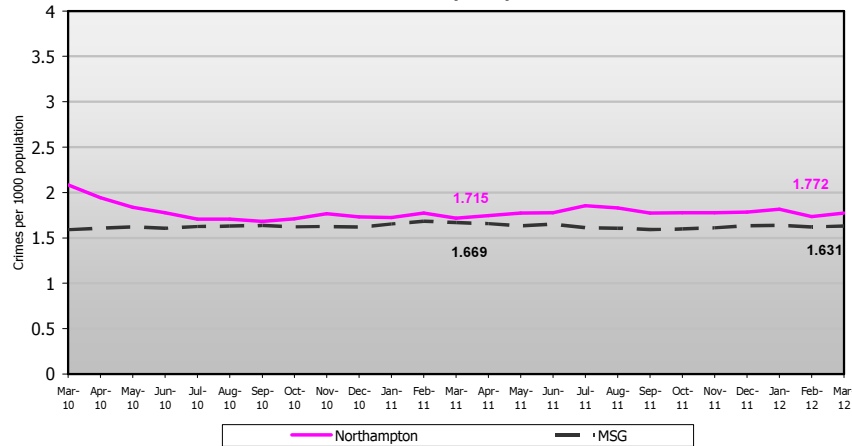
Domestic Burglary
Most Similar Group comparison



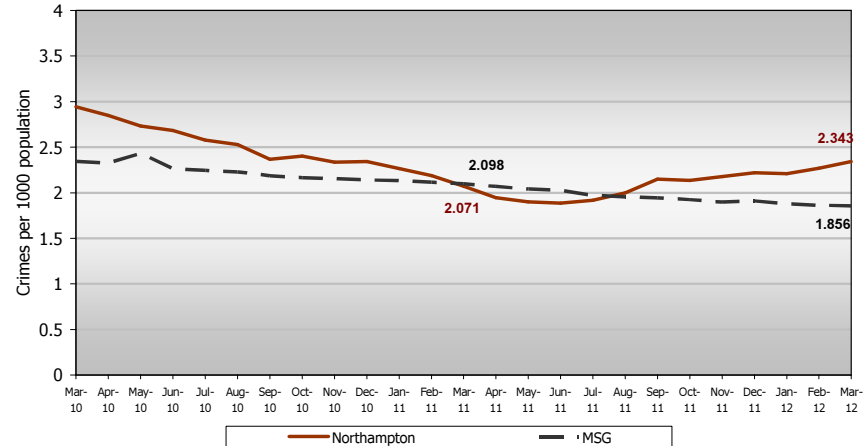
Theft from Vehicle
Most Similar Group comparison



Robbery
Most Similar Group comparison



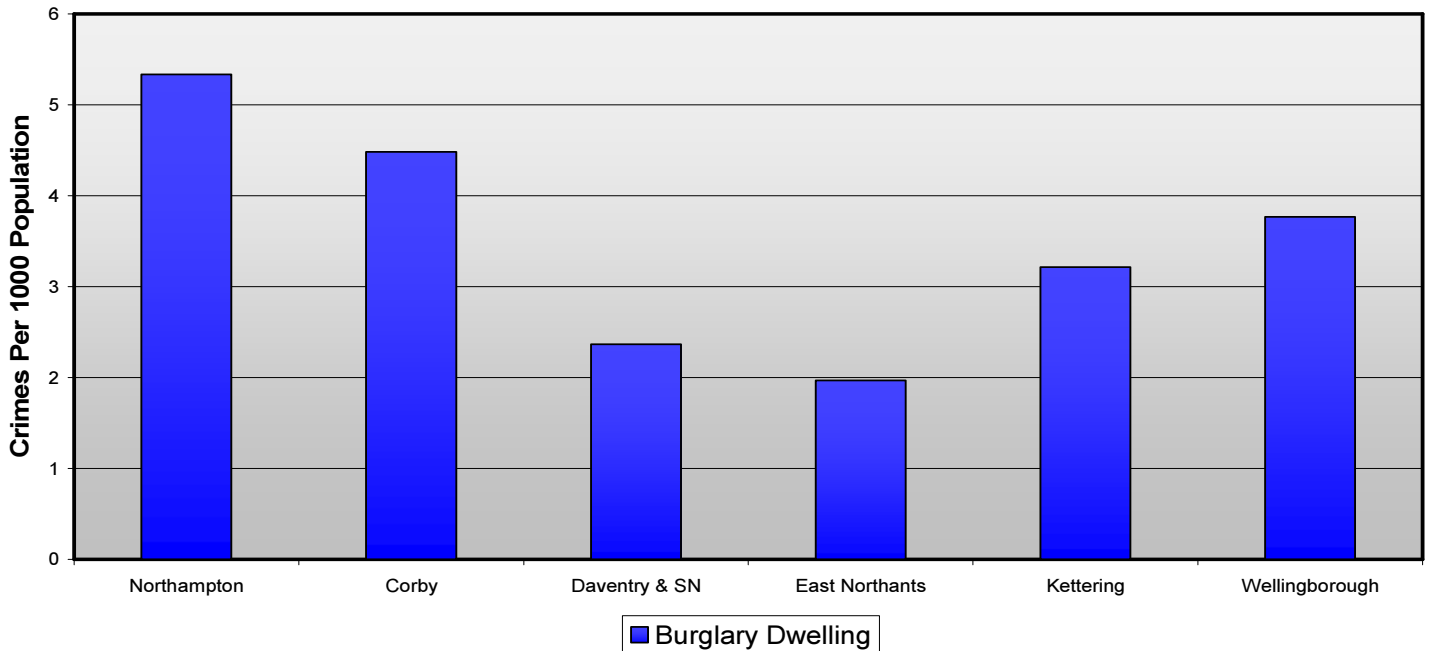
Theft of Vehicle
Most Similar Group comparison



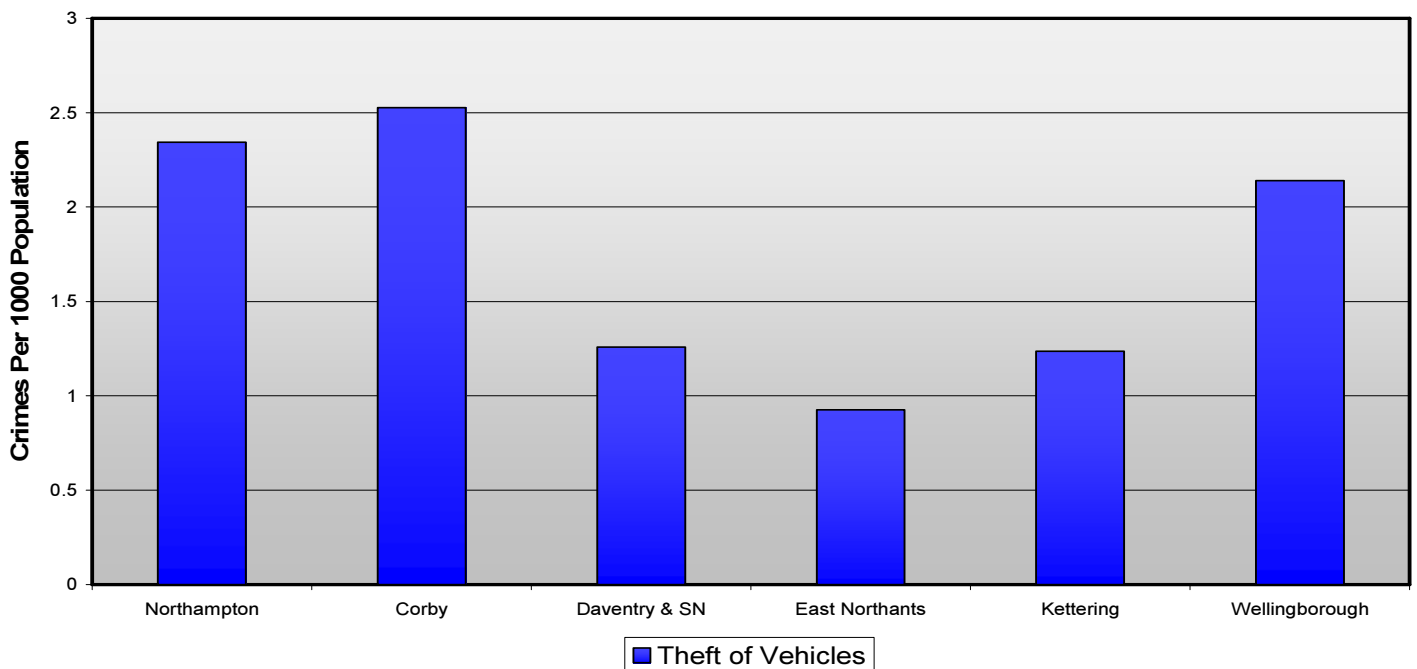
Cross County Comparative Performance

The graphs below show how Northampton compares to other localities within the county for all four elements of serious acquisitive crime. To allow reasonable comparison, accounting for population differences, the volume of crime is shown in terms of crimes per 1000 population.

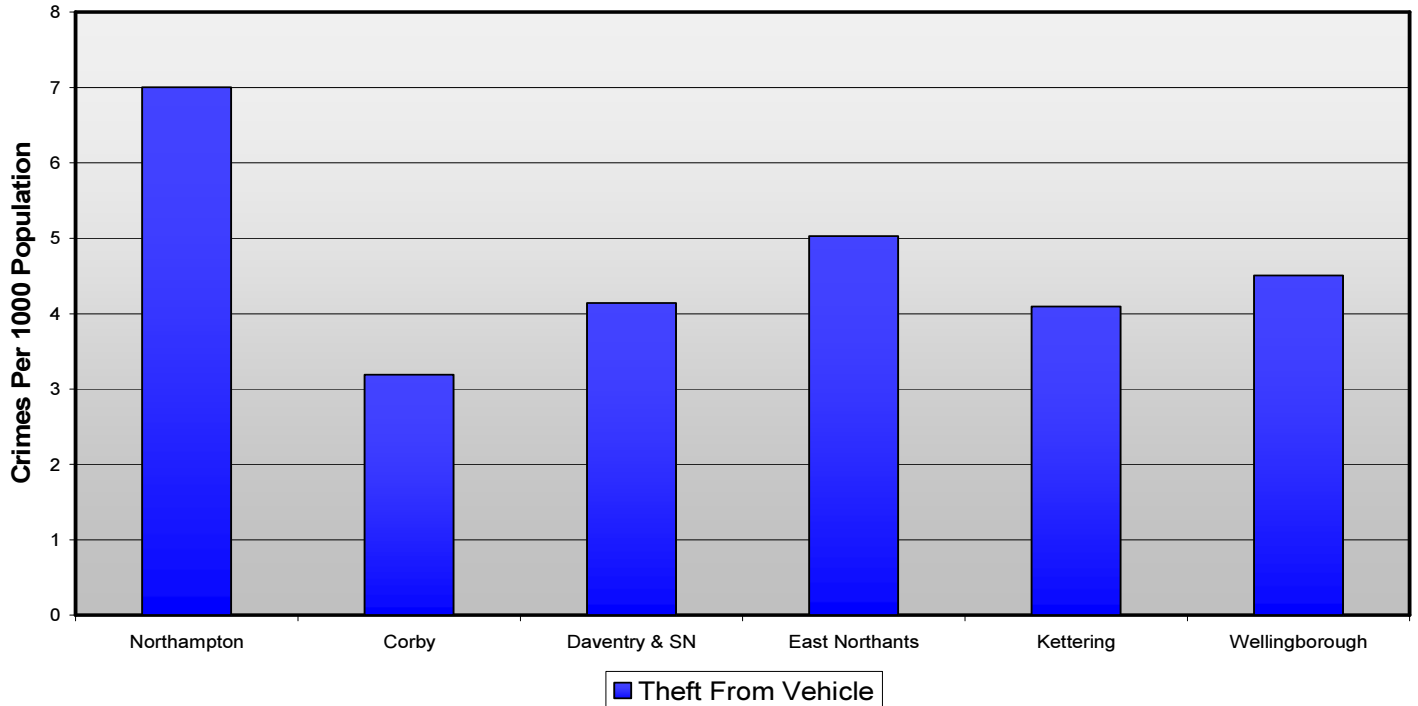
Burglary Dwelling: Crimes Per 1000 Population (2011/12)



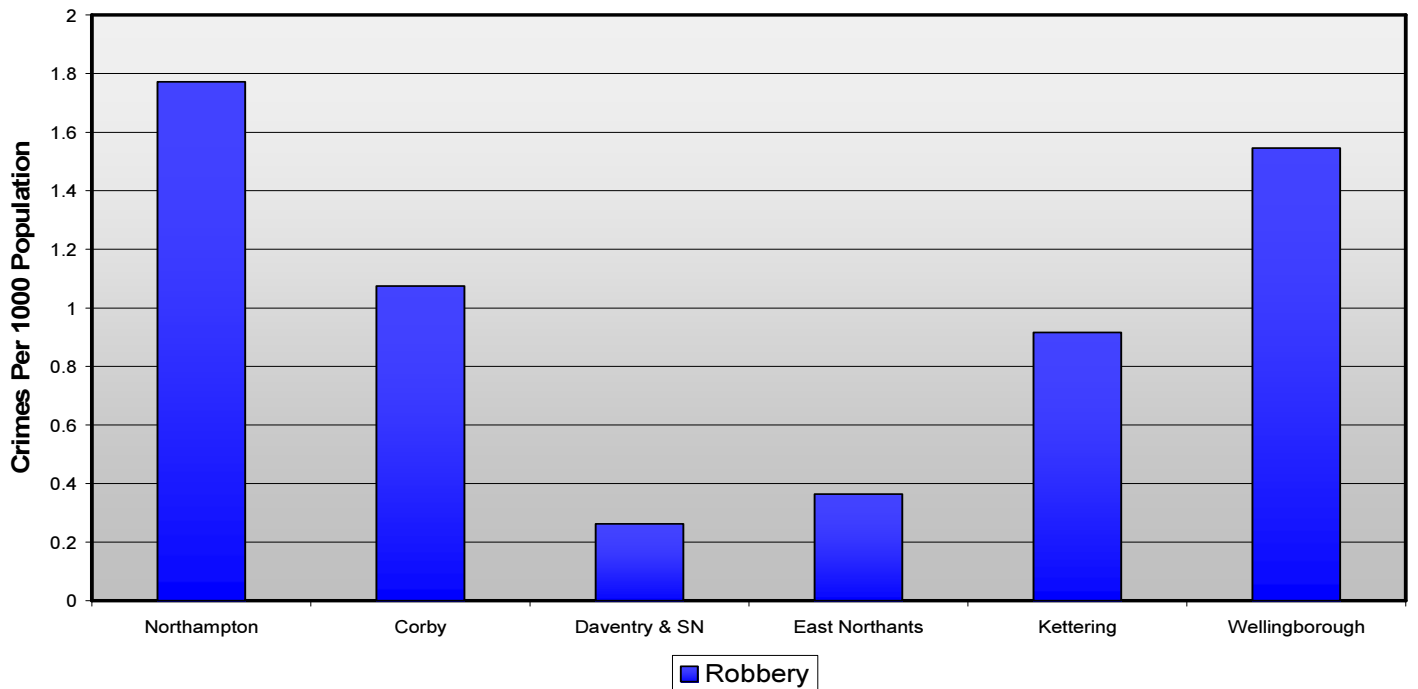
Theft Of Vehicles: Crimes Per 1000 Population (2011/12)



Theft From Vehicles: Crimes Per 1000 Population (2011/12)



Robbery: Crimes Per 1000 Population (2011/12)



Northampton Borough Council Scrutiny Panel 1 Community Safety *Population Demographics Data*

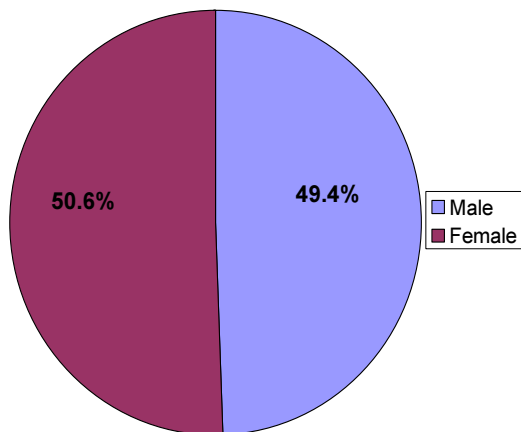
Contents

- Population Demographics: Gender
- Population Demographics: Age
- Population Demographics: Ethnicity
- Population Demographics: Density

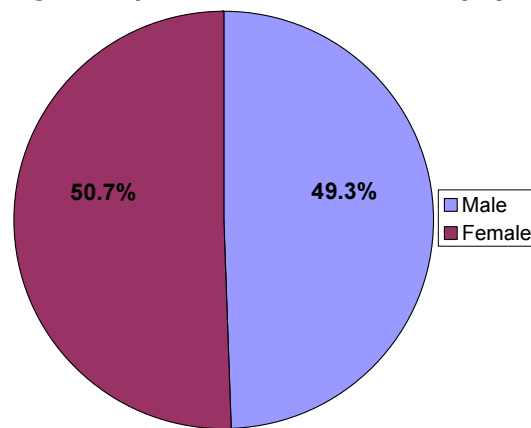
All Data in this document is based upon Office for National Statistics Population Estimates mid-2010.

Population Data by Gender

Northampton Population Estimates: Gender (%)

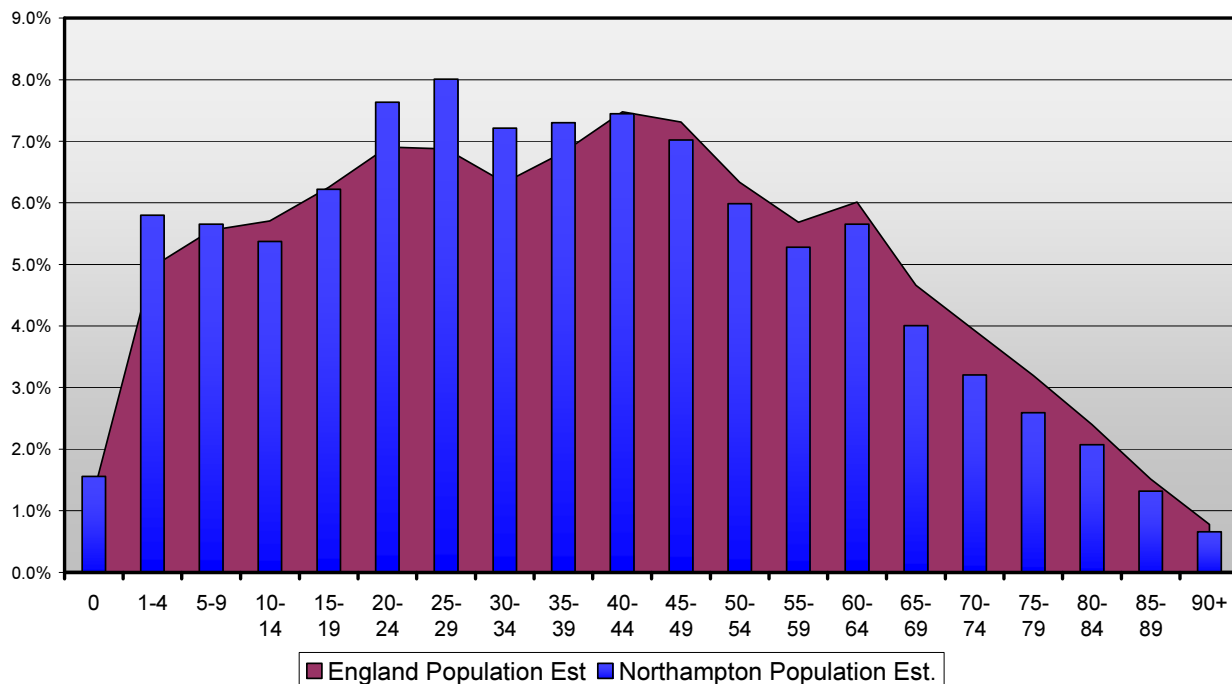


England Population Estimates: Gender (%)

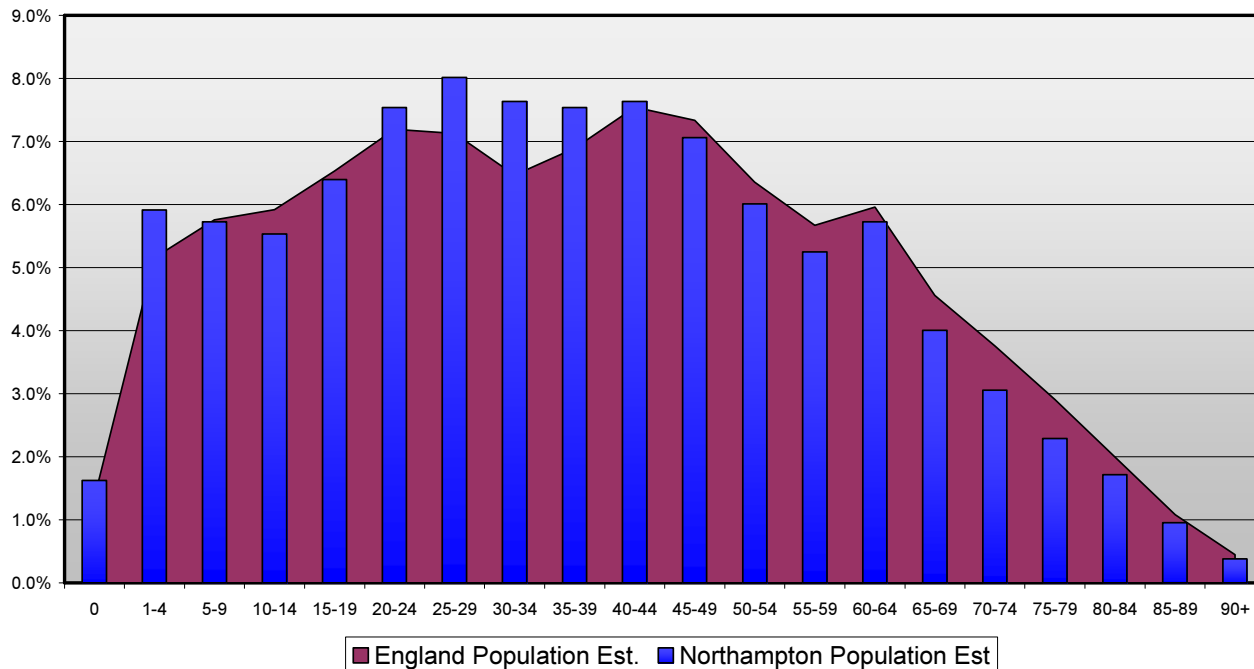


Population Data by Age Group

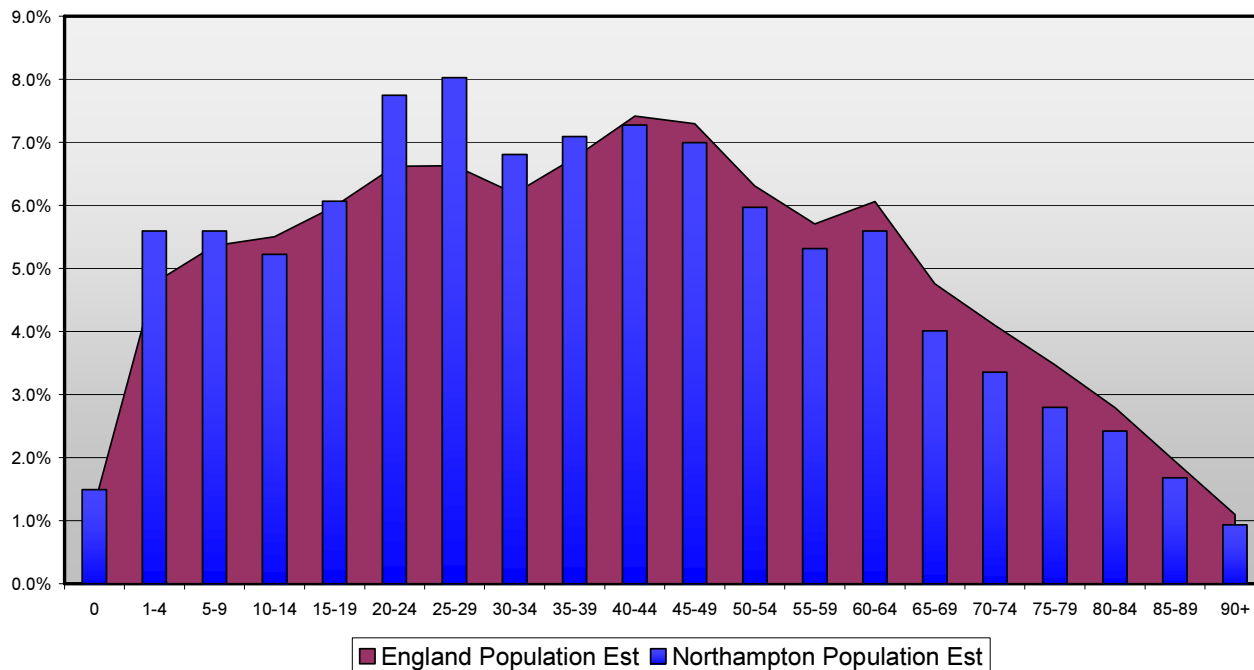
Northampton Population Estimates: Age (%)



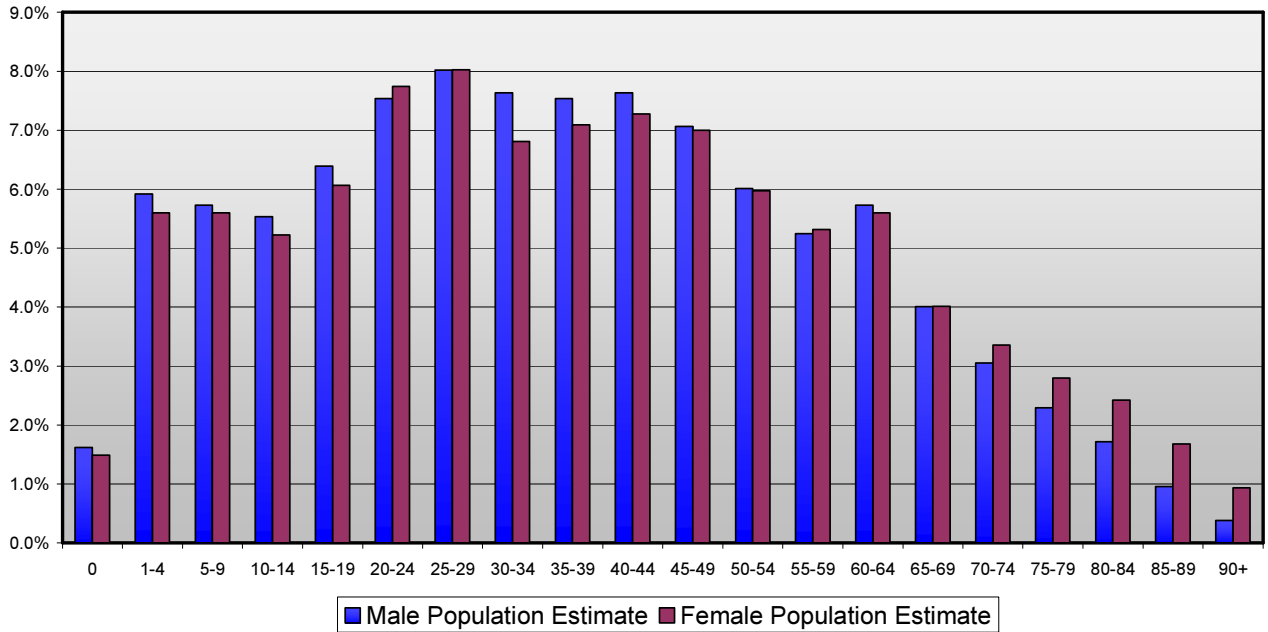
Northampton Male Population Estimates: Age (%)



Northampton Female Population Estimates: Age (%)

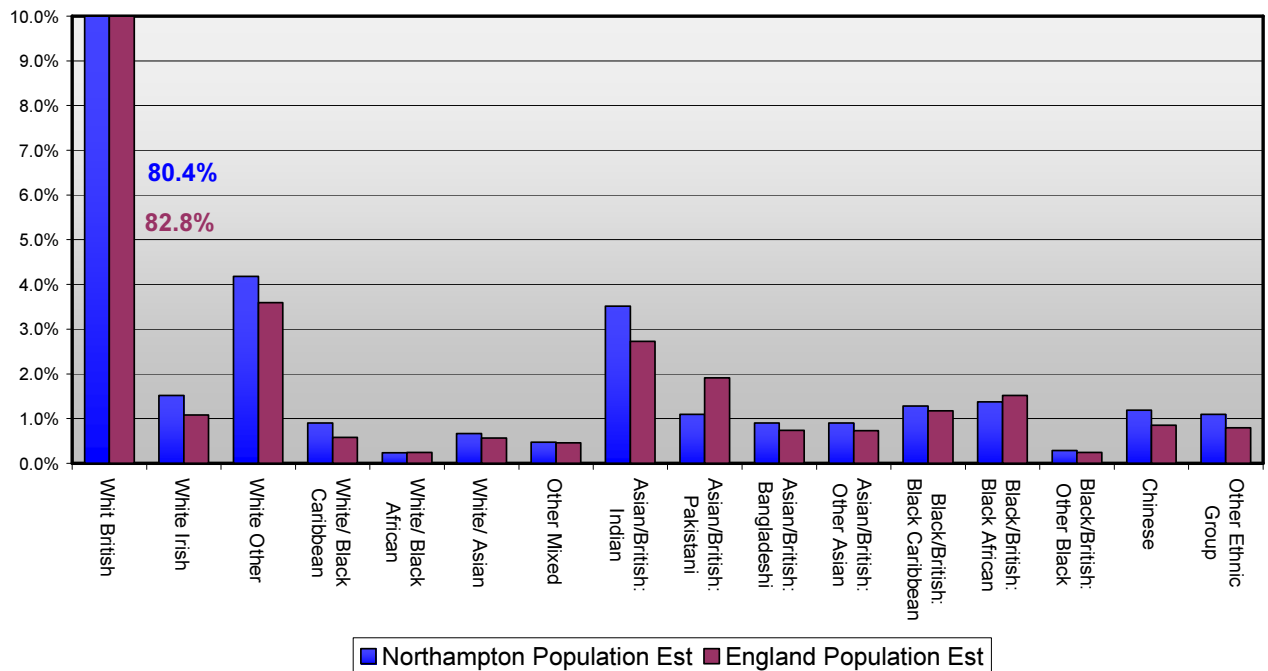


**Northampton Population Estimates: Age (%)
Male Vs Female**

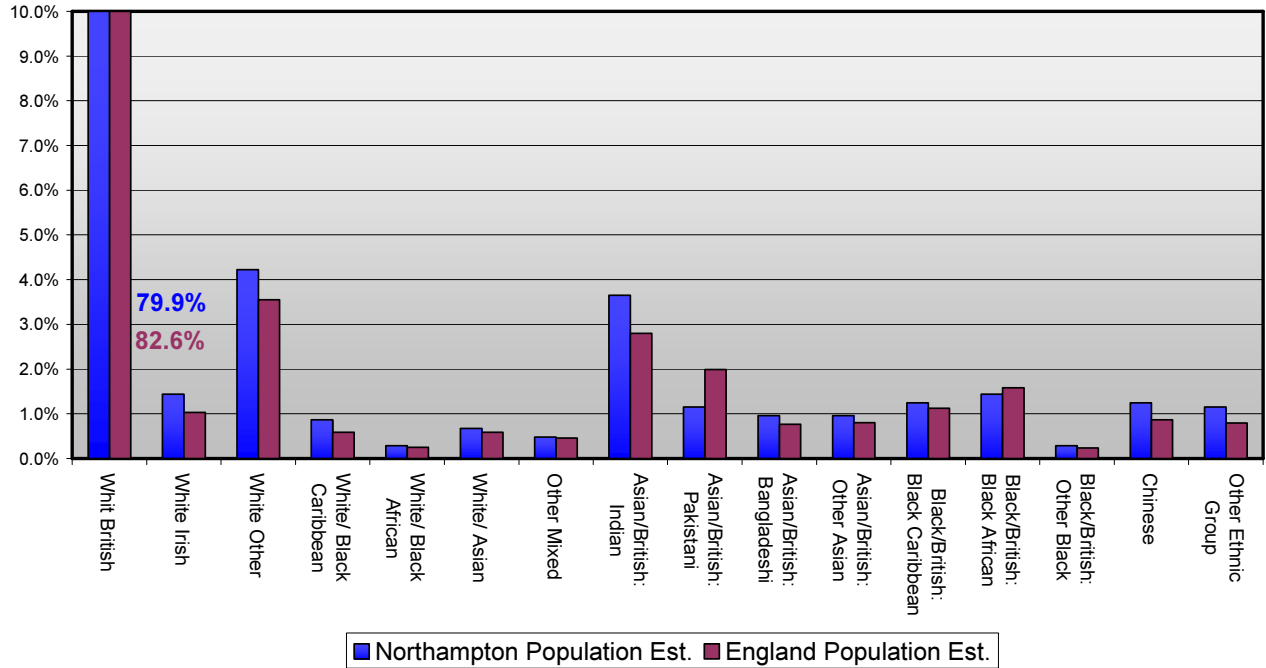


Population Data by Ethnicity Group

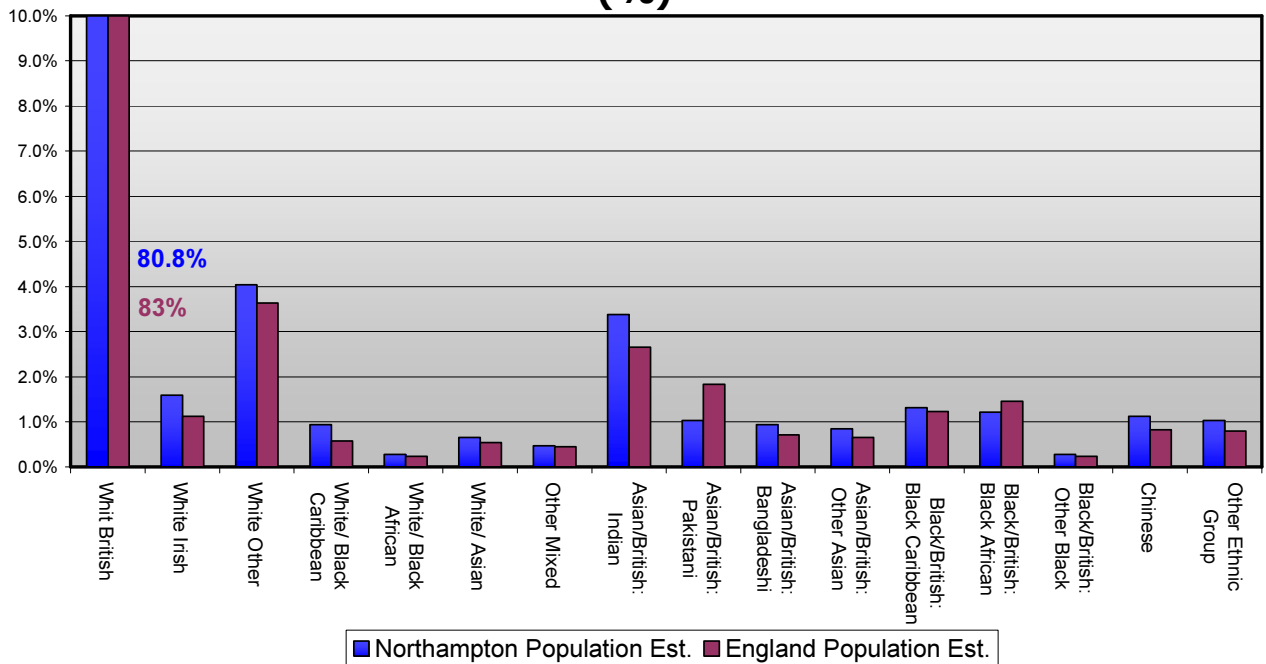
Northampton Population Estimates: Ethnicity (%)



Northampton Male Population Estimates: Ethnicity (%)

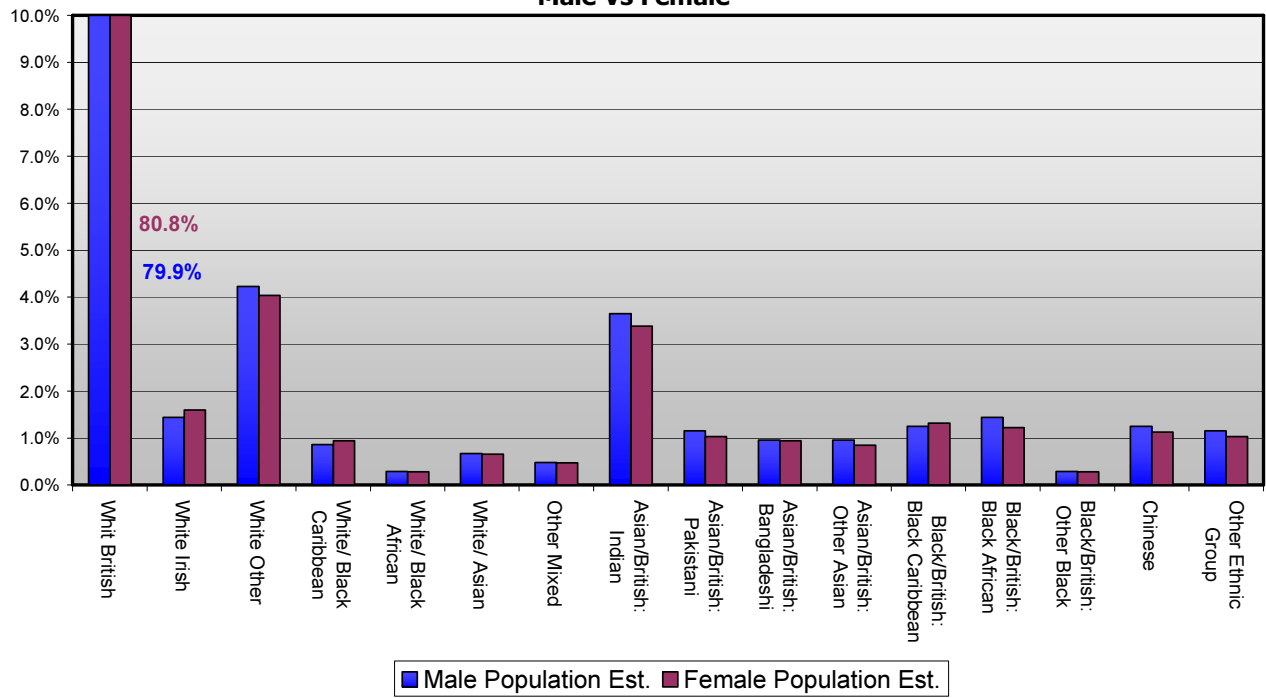


Northampton Female Population Estimates: Ethnicity (%)



Northampton Population Estimates: Ethnicity (%)

Male Vs Female





NORTHAMPTON
BOROUGH COUNCIL

NORTHAMPTON BOROUGH COUNCIL OVERVIEW AND SCRUTINY

SCRUTINY PANEL 1– SERIOUS ACQUISITIVE CRIME/VIOLENT CRIME AND COMMUNITY SAFETY

18th JUNE 2012

BRIEFING NOTE: POTENTIAL SITE VISITS

1 Introduction

- 1.1 The Panel, at its initial scoping meeting, agreed that there was a need for site visits to areas where there are current issues.

2 Information

- 2.1 In assessing the “hotspots”, there is a need for the Panel to also visit an area where specific work has been carried out
- 2.2 Potential site visits could be either Standen’s Barn or Bellinge, where work has been carried out and Spencer ward where there are current issues and work is to be commissioned.

3 Site visit proposal

- 3.1 It is suggested that either the Crime Prevention Manager or the Crime Prevention Design Adviser, Northants Police, is present at the site visits so that context can be added.
- 3.2 It is proposed that the Panel undertakes two site visits, as detailed in paragraph 2.2 above and reports back its findings to a future meeting.

4 Recommendations

- 4.1 That the Panel selects two areas from those detailed in paragraph 2.2 above
- 4.2 That the Scrutiny Officer, in consultation with the Crime Prevention Manager, Northants Police and the Panel, arranges two site visits, during July and early September.
- 4.3 That a report back on the findings of the site visits be presented to a future meeting of this Scrutiny Panel.

Author: Tracy Tiff, Overview and Scrutiny Officer, on behalf of Councillor Danielle Stone Chair, Scrutiny Panel 1– Serious Acquisitive Crime/Violent Crime and Community Safety

Date: 14th May 2012



Equality Impact Assessment Part 1: Screening

When reviewing, planning or providing Services Northampton Borough Council needs to assess the impacts on people. Both residents and staff, of how it works - or is planning to – work (in relation to things like disability). It has to take steps to remove/minimise any harm it identifies. It has to help people to participate in its Services and public life. **“Equality Impact Assessments” (EIAs)** prompt people to think things through, considering people’s different needs in relation to the law on equalities. The first stage of the process is known as ‘screening’ and is used to come to a decision about whether and why further analysis is – or is not – required. EIAs are published in line with transparency requirements.

A helpful guide to equalities law is available at: www.northampton.gov.uk/equality. A few notes about the laws that need to be considered are included at the end of this document. Helpful questions are provided as prompts throughout the form.

1 Name of policy/activity/project/practice	This is:
Overview and Scrutiny Review - Serious Acquisitive Crime/Violent Crime and Community Safety	Existing provision which will be reviewed by Scrutiny Panel 1 (Serious Acquisitive Crime/Violent Crime and Community Safety)

2. Screening undertaken (please complete as appropriate)	
Director or Head of Service	Steve Eley Head of Public Protection
Lead Officer for developing the policy/activity/practice	Tracy Tiff, Scrutiny Officer
Other people involved in the screening (this may be people who work for NBC or a related Service or people outside NBC)	Councillor Danielle Stone, Chair, Scrutiny Panel 1 Debbie Ferguson, Community Safety Manager Will Finn, Community Safety Data Analyst

3. Brief description of policy/activity/project/practice: including its main purpose, aims, objectives and projected outcomes, and how these fit in with the wider aims of the organisation.

Is it linked to NBC’s Corporate Plan? Service Plan? Other?

Please explain:

Overview and Scrutiny (O&S) is a means of providing non-Executive Councillors the opportunity to inform policy development and critical friend challenge to the Council’s Executive policy makers and decision makers (Cabinet). It also has a strong role in promoting the engagement of non-Executive Councillors in a diverse range of policy development activities, including performance improvement at the Council. Scrutiny aims to engage the community in its work either by attendance at meetings, public addresses to meetings, witness evidence or co-optees to Scrutiny Reviews.

This Review will hear from a number of key stakeholders to ensure that a wide range of

evidence is obtained to inform the Panel's information base.

The projected outcomes of this Scrutiny Review are:

- To provide a research paper for 2013/2014 to the Police and Crime Commissioner (PCC) detailing outcomes and the Council's priorities
- To identify the impact that serious acquisitive crime and violent crime has on the residents of Northampton
- To identify the serious acquisitive crime and violent crime issues that Northampton Borough Council, in partnership with other Agencies, can have an impact upon
- To make recommendations for improvement, as appropriate

All Scrutiny Reviews link to the Council's Corporate Plan and details of which are evidenced within the final report. This Scrutiny Review links to corporate priority CP4 – Help to create a place where people feel safe.

4 Relevance to Equality and Diversity Duties

Is it linked to NBC's Single Equality Scheme? NBC's Public Sector Duties? Equality Framework Criteria? Service or departmental equality priorities?

Please explain:

Overview and Scrutiny ensures that it adheres to the Council's statutory duty to provide the public with access to Scrutiny Reports/agendas/minutes and other such documents. Meetings of the Overview and Scrutiny/Scrutiny Panels are widely publicised, i.e.: on the Council's website, copies issues to the local media and paper copies available in the Council's One Stop Shop and local libraries.

Overview and Scrutiny is currently trialling paperless meetings. All information relating to meetings of the Council's Committees is published in both PDF and RTF format to allow for accessibility by Councillors, Officers and the general public. Should individuals not have the provision of a personal PC they will be able to view the data on a PC located in the Council's One Stop Shop and local libraries.

The Scrutiny Panel is mindful of the eight protected characteristics when undertaking scrutiny activity so that any recommendations that it makes can identify potential positive and negative impacts on any particular sector of the community. This will be borne in mind as the Scrutiny Review progresses and evidence is gathered. The final report of the Scrutiny Panels has a standard section entitled Equality Impact Assessment and details the findings

Any potential recommendations proposed by the Scrutiny Panel may have perceived adverse and beneficial effects for all diversity groups.

How will the aims affect our duty to:

Promote equality of opportunity?

Eliminate discrimination, harassment and victimisation?

Promote good community relations?

Promote positive attitudes towards people with protected characteristics?

Encourage participation of people with protected characteristics?

Protect and promote Human Rights?

For example, think about it from the perspectives of different groups in society. Does it cause harm or a benefit to any group(s) differently to others? Will it differentially affect:

Black, Asian or other ethnic minority and/or cultural groups?

Disabled people? And their carers?

Transgender people?

Men and women?

Lesbians, gay men and/or bisexual people?

Different religious communities/groups?

People of a particular age e.g. older people *or* children and young people?

Any other groups?

People with flexible or agreed working patterns?

Are there any aspects, including how it is delivered, or accessed, that could contribute to inequalities? (This should relate to all areas including Human Rights.)

Please explain:

The public's lack of understanding of either the Overview and Scrutiny function or the crime issues under review could lead to poorly attended and little public participation in the process.

The more public participation in the Overview and Scrutiny function will increase further participation; for example, should individuals be aware that individuals and representatives from community groups are attending such meeting and notice the difference that they can make; they too could become involved.

A comprehensive Overview and Scrutiny webpage has been developed and a leaflet promoting the work of Overview and Scrutiny and detailing how members of the public can become involved in the process has been issued to the Council's One Stop Shop and the town's main libraries. This leaflet is also distributed to attendees at all Overview and Scrutiny Committee and Scrutiny Panel meetings.

So that the Scrutiny Panel obtains a variety of views, the Chair of Scrutiny Panel 1 (has contacted a wide range of key witnesses, including

- NBC – Leader of the Council evidence
- Julie Seddon, the Chair of Community Safety Partnership
- Mark Evans, Laura Mayor, Crime Prevention Manager, Chief Inspector Fay Tennet, Northants Police
- Deborah Presbury, IOM Team, Northants Probation
- Neighbourhood Wardens
- Head of Offender Management Services, Northampton Prisons
- Dawn Wintle, Accident and Emergency, Northampton General Hospital
- Victim Support
- Northampton Youth Forum
- Police and Crime Commissioner
- Housing Services, Northampton Borough Council
- Neighbourhood Management, Northampton Borough Council
- Lynn Chapman, Sunflower Centre
- Ward Councillors

As the Review progresses the Panel will look to ensuring that the views of young people are represented in its evidence base.

Evidence gathered from all sources will be analysed and contained within the Scrutiny Panel's final report.

The Chair of the Panel has contacted two key individuals to be co opted to the Review. Details of the prospective co optees are contained within the scope of this Review Their key roles include:

- To act as a non-party-political voice for those who live and/or work in the Borough of Northampton
- To bring specialist knowledge and/or skills to the Overview and Scrutiny process and/or to bring an element of external challenge by representing the public.
- To take an interest in, attend and contribute to the Panel.
- To obtain specific information regarding violent crime

Evidence gathered from the key witnesses will be analysed and contained within the Scrutiny Panel's final report. The comments of the key witnesses will be minuted and published publicly within the Council's meeting management system.

Should the Scrutiny Panel conclude the need for recommendations for change; the expected impact of these changes will be detailed within the Scrutiny Panel's final report.

The Scrutiny Panel's report, after it has been endorsed by the Overview and Scrutiny Committee will be forwarded to the Council's Cabinet for consideration; Cabinet will then become responsible for delivering the recommendations that it accepts.

Meetings of this Scrutiny Panel are held in easily access locations (wheel chair accessible), with the provision of a hearing loop and start at 6pm; so aiming to enable those with working commitments to attend. It could be found that the timing of Overview and meetings (evenings) may not be suitable to all, for example those who are required to work during the evenings.

There is a standing agenda item on all Overview and Scrutiny Committee and Scrutiny Panel meetings enabling members of the public to address the Committee/Panel. The public does not have to register their intention to speak in advance but is advised to arrive a few minutes prior to the start of the meeting and notify the Scrutiny Officer of their intention to speak. A Scrutiny Public Speaking Protocol has been produced and advice and assistance is offered and available to members of the public wishing to attend and address an Overview and Scrutiny Committee/Panel meeting.

The Council has access to an interpretative Service and therefore such documents can be supplied in formats other than English if required.

Provision has been made for members of public who have a disability, e.g. the agenda will be displayed on a large screen in the Committee room. For those who may suffer from a visual impairment, the blind have access to 'talking' documents, those whose first language is not English have access to translation services and the building in which the meetings will occur contain hearing loops and are accessible by those with severe mobility issues, such as wheel chair users.

If you have indicated there is a negative impact on any group, is that impact:

Legal?

N/A

Please explain:

The impact of the Scrutiny report cannot be assessed until, at the earliest, an outline of a report has been developed. Therefore within the Scrutiny Panel's report it could suggest that any impact on the eight protected characteristics be taken into account.

However any potential recommendations could have an effect on the community of the borough of Northampton, such as:

- All residents
- Local businesses
- Organisations
- Voluntary and Community Sector
- Tourists
- Councillors
- Key Partners

Intended?

No

Please explain:

The development of a Scrutiny Report regarding serious acquisitive crime/violent crime/community safety could have adverse and positive impact on the eight protected characteristics. However, as no Equality Impact Assessment can be completed yet for this, its impact on these groups has not been subject to a detailed level of scrutiny.

The Scrutiny Panel will be mindful of the eight protected characteristics when undertaking its Scrutiny Review so that any recommendations that it makes can identify potential positive and negative impacts on any particular sector of the community. The Scrutiny Panel can at the very least however, highlight in its report the need for an Equality Impact Assessment to be carried out at the appropriate time.

5 Evidence Base for Screening

List the evidence sources you have used to make this assessment (i.e. the *known evidence*) (E.g. Index of Multiple Deprivation, workforce data, population statistics, any relevant reports, customer surveys, equality monitoring data for the Service area.)

The number of public attending the Scrutiny Panel meetings is recorded.

Any feedback received from the above is taken into consideration and used to formulate recommendations to improve the Service.

- Context:
 - Local statistics
 - Demographics – local and national
 - Benchmarking data from comparable Local Authorities
- Baseline data:
 - National crime statistics
 - Local crime statistics
- Synopsis of various research documents and other published documents

Details of best practice, external to Northampton, will be presented to the Scrutiny Panel, which will help to inform the evidence base.

Are there any significant gaps in the known evidence base? If so what are your recommendations for how and by when those gaps will be filled?

Equalities profile of public attendees/witnesses/co-optees to the Scrutiny Panel is not currently recorded;

6 Requirements of the equality duties:

(remember there's a note to remind you what they are at the end of this form and more detailed information at www.northampton.gov.uk/equality)

Will there be/has there been consultation with all interested parties?

Yes

Please explain:

The Scrutiny Panel will be consulted upon this EIA (Screening) document.

Are proposed actions necessary and proportionate to the desired outcomes?

Yes

Please explain:

The Scrutiny Panel will after completion of its evidence gathering, formulate conclusions and recommendations as appropriate, which will have the intended purpose of recommending a system of community participation and involvement with other Agencies and interested parties. Recommendations will link to SMART (Specific, Measurable, Achievable, Realistic and Time) Objectives. Should the recommendations be accepted by the Council's Cabinet, they will then be implemented and necessary actions drawn up.

Where appropriate, will there be scope for prompt, independent reviews and appeals against decisions arising from the proposed policy/practice/activity?

N/A

Please explain:

Does the proposed policy/practice/activity have the ability to be tailored to fit different individual circumstances?

Yes

Please explain:

The objective of this Scrutiny activity is:

- To investigate, as a benchmark, Northampton's crime statistics in relation to serious acquisitive and violent crime
- To identify 'hotspots' in relation to serious acquisitive and violent crime
- To identify the impact that serious acquisitive crime and violent crime has on the residents of Northampton
- To identify the serious acquisitive crime and violent crime issues that Northampton Borough Council, in partnership with other Agencies, can have an impact upon

The required outcomes are:

- To provide a research paper for 2013/2014 to the Police and Crime Commissioner (PCC) detailing outcomes and the Council's priorities
- To investigate what Northampton Borough Council services can do to add further value to effectively addressing serious acquisitive crime across the borough
- To identify which services within the Council that could contribute to the reduction in serious acquisitive crime
- To make recommendations for improvement, as appropriate

Where appropriate, can the policy/practice/activity exceed the minimum legal equality and human rights requirements, rather than merely complying with them?

Yes

Please explain:

The selection of witnesses to participate in the Review has specifically and deliberately included representatives of Groups working with and for people with protected characteristics.

Overview and Scrutiny will continue to offer facilities, such as language translation,

From the evidence you have and strategic thinking, what are the **key risks** (the harm or 'adverse impacts') **and opportunities** (benefits and opportunities to promote equality) this policy/practice/activity might present?

	Risks (Negative)	Opportunities (Positive)
Race	No impact anticipated but there is the need to ensure appropriate access to interpreting Services as necessary	
Disability	No impact anticipated – However there are no arrangements in place such as sign language interpreters at meetings	Meetings of this Scrutiny Panel are held in accessible meeting rooms, normally with the provision of a hearing loop
Gender or Gender Identity/Gender Assignment		Staff training addresses Equality and Diversity. Meetings of both the Scrutiny Panel and the Neighbourhood meetings are attended by all genders.
Pregnancy and Maternity (including breastfeeding)	Initially no impact anticipated but there is the need to ensure equitable access for all attendees and Councillors at meetings of this Scrutiny	

	Panel	
Sexual Orientation		No impact anticipated
Age (including children, youth, midlife and older people)		No impact anticipated. Meetings of this Scrutiny Panel and Neighbourhood Meetings are normally held during the evening with the aim that they are accessible to all.
Religion, Faith and Belief		No impact anticipated
Human Rights		No impact anticipated

--

8 Decision

Set out the rationale for deciding whether or not to proceed to full impact assessment

Date of Decision: 10th May 2012

EITHER: We judge that a full impact assessment is not necessary since: A Scrutiny Review of the Retail Experience is currently underway, and as part of the evidence gathering process will receive comments from a wide range of stakeholders as detailed in earlier sections of this EIA (Screening). Any changes proposed as a result of the review will be impact assessed before implementation.

OR: We judge that a full impact assessment is necessary since:

Equality Duties to be taken into account in this screening include:

Prohibited Conduct under The Equality Act 2010 including:

Direct discrimination (including by association and perception e.g. carers); Indirect discrimination; Pregnancy and maternity discrimination; Harassment; third party harassment; discrimination arising from disability.

Public Sector Duties (Section 149) of the Equality Act 2010 for NBC and Services provided on its behalf: (due to be effective from 4 April 2011)

NBC and Services providing public functions must in providing Services have due regard to the need to: **eliminate unlawful discrimination, harassment and victimisation; advance equality of opportunity and foster good relations between different groups.** 'Positive action' permits proportionate action to overcome disadvantage, meet needs and tackle under-representation.

Rights apply to people in terms of their "Protected Characteristics":

Age; Gender; Gender Assignment; Sexual Orientation; Disability; Race; Religion and Belief; Pregnancy; Maternity. But Marriage and Civil Partnership do not apply to the public sector duties.

Duty to "advance equality of opportunity":

The need, when reviewing, planning or providing Services/policies/practices to assess the impacts of Services on people in relation to their 'protected characteristics', take steps to remove/minimise any negative impacts identified and help everyone to participate in our Services and public life. **Equality Impact Assessments** remain best practice to be used. Sometimes **people have particular needs** e.g. due to gender, race, faith or disability that need to be addressed, not ignored. NBC must have due regard to the **duty to make reasonable adjustments** for people with disabilities. NBC must **encourage people who share a protected characteristic to participate in public life** or any other activity in which their participation is too low.

Duty to 'foster good relations between people'

This means having due regard to the need to **tackle prejudice** (e.g. where people are picked on or stereotyped by customers or colleagues because of their ethnicity, disability, sexual orientation, etc) and **promote understanding**.

Lawful Exceptions to general rules: can happen where action is proportionate to achieve a legitimate aim and not otherwise prohibited by anything under the Equality Act 2010. There are some special situations (see Ch 12 and 13 of the Equality Act 2010 Statutory Code of Practice – Services, Public Functions and Associations).

National Adult Autism Strategy (Autism Act 2009; statutory guidelines) including:

to improve how Services identify and meet needs of adults with autism and their families.

Human Rights include:

Rights under the European Convention include not to be subjected to degrading **treatment**; **right to a fair trial** (civil and criminal issues); **right to privacy** (subject to certain exceptions e.g. national security/public safety, or certain other specific situations); **freedom of conscience** (including religion and belief and rights to manifest these limited only by law and as necessary for public safety, public order, protection of rights of others and other specified situations); **freedom of expression** (subject to certain exceptions); **freedom of peaceful assembly and to join trade unions** (subject to certain exceptions); **right not to be subject to unlawful discrimination** (e.g. sex, race, colour, language, religion, political opinion, national or social origin); **right to peaceful enjoyment of own possessions** (subject to certain exceptions e.g. to secure payment of taxes or other contributions or penalties); **right to an education**; **right to hold free elections by secret ballot**. The European Convention is given effect in UK law by the Human Rights Act 1998.